

Winters Flat Primary School (652)

2007 School Level Report

Please check the data in this report. If, after comparing it with your own records, you deem it to be incorrect or incomplete, follow the directions on the web page below:

- <http://www.sofweb.vic.edu.au/standards>, then click on '**Accountability and Improvement**', then click on '**School Performance Reports**'.
-
-

Contents

	Page No.
Privacy	3
SFO Density and LBOTE	4
Assessment of Reading Prep to Year 2	5-6
Teacher Judgments against the VELs	7-15
AIM Reading	16
AIM Number	17
Teacher Assessment of Student Progress (PSD students)	18-19
Enrolments	20
Student Absence	21
Parent Opinion	22-23
Staff Opinion	24
Staff Sick Leave	25
Teaching Staff Retention	26
Bank Balances	27

Privacy

When reporting on the school's performance to the school community, care must be taken to avoid the disclosure of information that can directly or indirectly identify an individual. This may be a particular issue when reporting on the achievement of specific cohorts of students or the opinions of staff where there are small numbers.

In situations where confidentiality cannot be assured, schools may wish to report on the mean result or provide a written comment on school, year level or cohort performance.

Where the School Level Report is provided to school council members as part of any annual reporting process, or used for discussion on a school's performance, such as in consultation with the school community in the school self-evaluation process, it is important to remind school community members of their duty to only use this information for the purpose it was provided, and that the material must be kept confidential.

It is important to note that information that identifies an individual or can be used with other readily available information to identify a person is now protected by the *Information Privacy Act 2000* (<http://www.education.vic.gov.au/about/deptpolicies/informationprivacy.htm>).

SFO Density and LBOTE

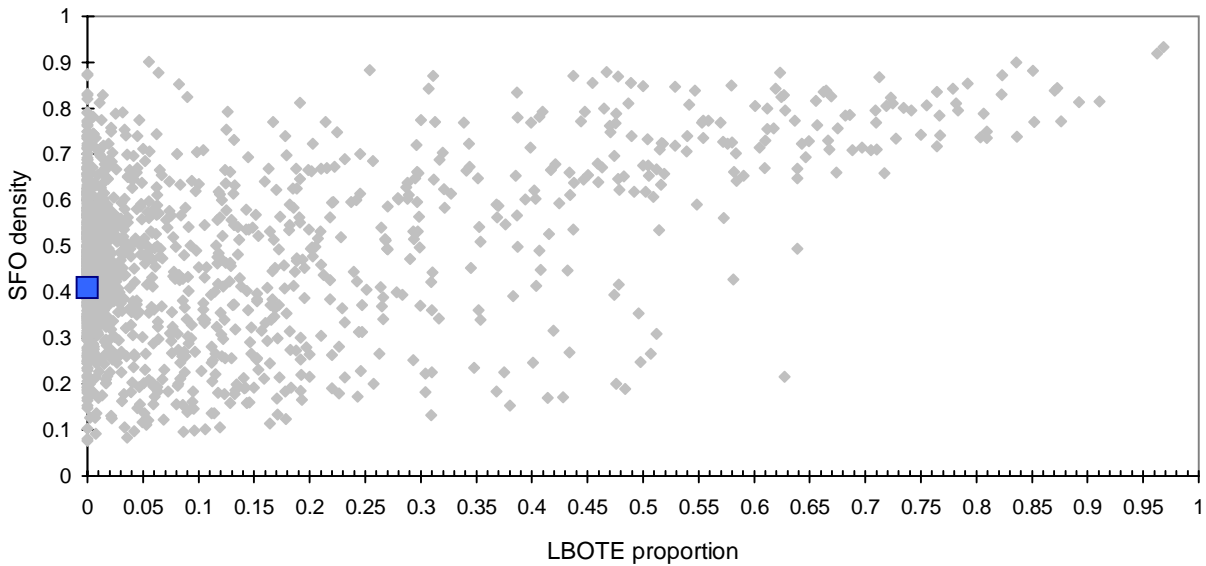
School no: 652

School name: Winters Flat Primary School

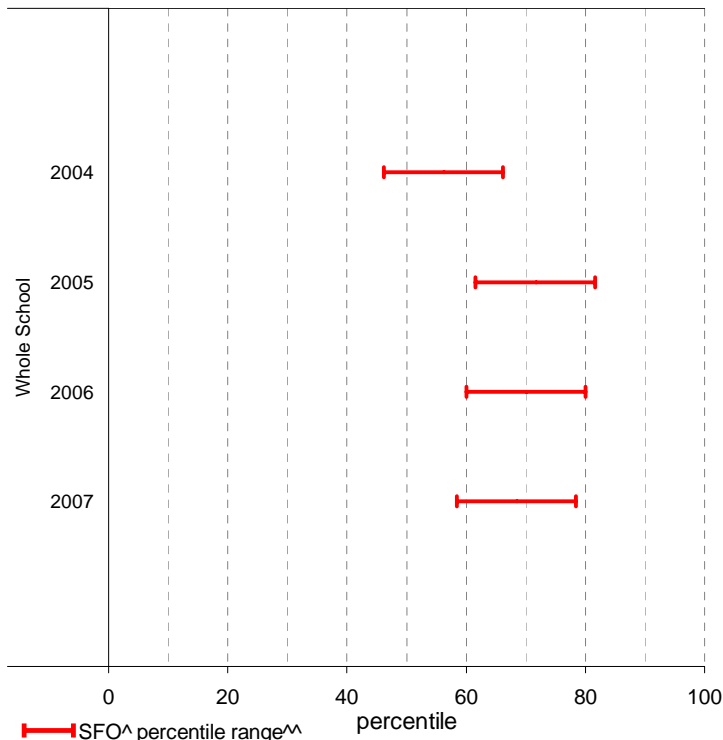
Explanation: The chart below plots the school's 2007 SFO (Student Family Occupation) density[^] and LBOTE (Language Background Other Than English) proportion* against that of all government schools. This school is highlighted as a square on the chart.

	2000	2001	2002	2003	2004	2005	2006	2007
SFO density [^] :					0.48	0.40	0.39	0.41
LBOTE proportion*:	0.00	0.00	0.00	0.00	0.00	0.00	0.00	0.00

School's 2007 SFO density and LBOTE proportion against that of all government schools



School's SFO[^] percentile range^{^^} over time



Notes: [^] The higher the SFO density, the lower the SFO percentile, the lower the socio-economic status (SES).
^{^^} The school's SFO percentile range shows the 20% of schools with an SFO Density most like this school.
 * From 2007, a student is LBOTE if either the student or one parent/guardian speaks a language other than English at home. Prior to 2007, a student is LBOTE if the student or one of the parents was born in a non-English speaking country.

Assessment of Reading: Prep to Year 2

School no: 652

School name: Winters Flat Primary School

Explanation: Students' ability to read unsighted text is assessed at the end of each year. The data presented here includes 'deemed not capable' students.

More detailed information (including data where deemed not capable students are excluded) is available in the Assessment of Reading report, available from the School Performance Reports website.

Source of data: Data transmitted from school to DEECD via an online web-form.

	Prep										Year 1										Year 2												
	School									State	School									State	School									State			
	2003		2004		2005		2006		2007		2007	2003		2004		2005		2006		2007		2007	2003		2004		2005		2006		2007		2007
	(No.)	%	(No.)	%	(No.)	%	(No.)	%	(No.)	%	%	(No.)	%	(No.)	%	(No.)	%	(No.)	%	(No.)	%	%	(No.)	%	(No.)	%	(No.)	%	(No.)	%	%		
Level 1																																	
100%	(17)	56.7	(25)	64.1	(16)	69.6	(18)	48.6	(22)	64.7	68.1	(19)	100.0	(34)	100.0	(38)	100.0	(29)	100.0	(41)	97.6	94.9											
90-99%	(9)	30.0	(11)	28.2	(7)	30.4	(16)	43.2	(9)	26.5	26.2									(1)	2.4	4.4											
80-89%	(3)	10.0	(1)	2.6			(1)	2.7	(1)	2.9	2.5											0.3											
51-79%			(2)	5.1			(2)	5.4	(2)	5.9	1.6											0.2											
50% or below	(1)	3.3									1.7											0.3											
Total	(30)	100.0	(39)	100.0	(23)	100.0	(37)	100.0	(34)	100.0	100.0	(19)	100.0	(34)	100.0	(38)	100.0	(29)	100.0	(42)	100.0	100.0											
Subtotal 90-100%	(26)	86.7	(36)	92.3	(23)	100.0	(34)	91.9	(31)	91.2	94.3	(19)	100.0	(34)	100.0	(38)	100.0	(29)	100.0	(42)	100.0	99.3											
Level 5																																	
100%	(11)	36.7	(18)	46.2	(9)	39.1	(8)	21.6	(8)	23.5	44.5	(16)	84.2	(26)	76.5	(37)	97.4	(25)	86.2	(32)	76.2	82.0	(27)	96.4	(20)	100.0	(27)	96.4	(37)	100.0	(32)	100.0	90.9
90-99%	(8)	26.7	(9)	23.1	(9)	39.1	(15)	40.5	(14)	41.2	35.9	(3)	15.8	(8)	23.5	(1)	2.6	(4)	13.8	(9)	21.4	15.9	(1)	3.6			(1)	3.6				8.6	
80-89%	(4)	13.3	(3)	7.7	(2)	8.7	(2)	5.4	(5)	14.7	5.2											0.6										0.2	
51-79%	(2)	6.7	(2)	5.1	(1)	4.3	(12)	32.4	(3)	8.8	3.9											0.4										0.1	
50% or below	(5)	16.7	(7)	17.9	(2)	8.7			(4)	11.8	10.5											1.1										0.3	
Total	(30)	100.0	(39)	100.0	(23)	100.0	(37)	100.0	(34)	100.0	100.0	(19)	100.0	(34)	100.0	(38)	100.0	(29)	100.0	(42)	100.0	100.0	(28)	100.0	(20)	100.0	(28)	100.0	(37)	100.0	(32)	100.0	100.0
Subtotal 90-100%	(19)	63.3	(27)	69.2	(18)	78.3	(23)	62.2	(22)	64.7	80.4	(19)	100.0	(34)	100.0	(38)	100.0	(29)	100.0	(41)	97.6	97.9	(28)	100.0	(20)	100.0	(28)	100.0	(37)	100.0	(32)	100.0	99.5
Level 15																																	
100%			(2)	5.1	(2)	8.7	(1)	2.7				(8)	42.1	(16)	47.1	(19)	50.0	(12)	41.4	(11)	26.2	37.6	(19)	67.9	(12)	60.0	(18)	64.3	(33)	89.2	(30)	93.8	64.1
90-99%			(10)	25.6	(6)	26.1	(5)	13.5				(9)	47.4	(15)	44.1	(19)	50.0	(12)	41.4	(22)	52.4	49.1	(8)	28.6	(8)	40.0	(9)	32.1	(4)	10.8	(2)	6.2	32.3
80-89%			(5)	12.8	(1)	4.3	(2)	5.4				(1)	5.3					(1)	3.4	(2)	4.8	6.1	(1)	3.6								1.8	
51-79%			(7)	17.9	(9)	39.1	(4)	10.8				(1)	5.3	(1)	2.9	(4)	13.8	(6)	14.3		2.9						(1)	3.6				0.7	
50% or below			(15)	38.5	(5)	21.7	(25)	67.6						(2)	5.9			(1)	2.4		4.3											1.1	
Total			(39)	100.0	(23)	100.0	(37)	100.0				(19)	100.0	(34)	100.0	(38)	100.0	(29)	100.0	(42)	100.0	100.0	(28)	100.0	(20)	100.0	(28)	100.0	(37)	100.0	(32)	100.0	100.0
Subtotal 90-100%			(12)	30.8	(8)	34.8	(6)	16.2				(17)	89.5	(31)	91.2	(38)	100.0	(24)	82.8	(33)	78.6	86.7	(27)	96.4	(20)	100.0	(27)	96.4	(37)	100.0	(32)	100.0	96.4
Level 20																																	
100%							(1)	2.7						(7)	20.6	(7)	18.4	(3)	10.3				(11)	39.3	(5)	25.0	(16)	57.1	(23)	62.2	(14)	43.8	48.8
90-99%							(4)	10.8						(17)	50.0	(29)	76.3	(21)	72.4				(15)	53.6	(15)	75.0	(11)	39.3	(13)	35.1	(18)	56.2	46.0
80-89%														(6)	17.6	(2)	5.3						(2)	7.1			(1)	3.6	(1)	2.7		2.5	
51-79%														(1)	2.9																	0.9	
50% or below							(32)	86.5						(3)	8.8			(5)	17.2													1.8	
Total							(37)	100.0						(34)	100.0	(38)	100.0	(29)	100.0				(28)	100.0	(20)	100.0	(28)	100.0	(37)	100.0	(32)	100.0	100.0
Subtotal 90-100%							(5)	13.5						(24)	70.6	(36)	94.7	(24)	82.8				(26)	92.9	(20)	100.0	(27)	96.4	(36)	97.3	(32)	100.0	94.8

	2003	2004	2005	2006	2007	2003	2004	2005	2006	2007	2003	2004	2005	2006	2007
No. of students DNC ¹ :	1	0	0	0	0	0	0	0	0	0	1	0	0	0	0
No. of students at risk ² :	4	3	0	3	3	0	0	0	0	1	1	0	1	0	

Notes:

¹ Students can be DNC (deemed not capable) only if they meet one of the conditions (insufficient English, receiving D&I funding, insufficient attendance at the school or referred from Reading Recovery) AND read below the minimum standard.

² The number of students at risk is the number of students reading at less than 90% accuracy at Level 1 for Prep, Level 5 for Year 1 or Level 15 for Year 2.

Assessment of Reading: Prep to Year 2

School no: 652

School name: Winters Flat Primary School

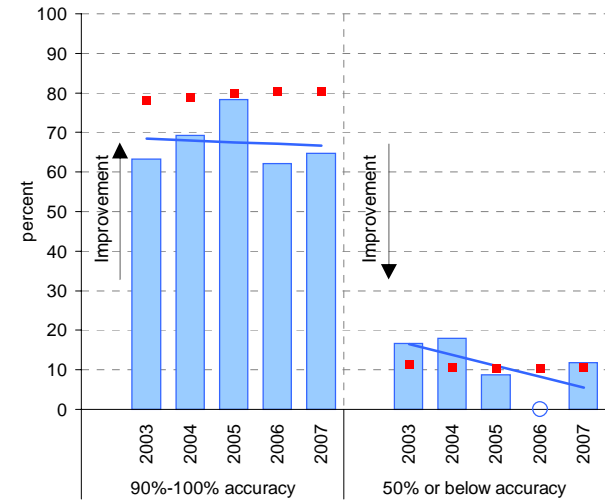
Explanation: Students' ability to read unsighted text is assessed at the end of each year.

Source of data: Data transmitted from school to DEECD via an online web-form.

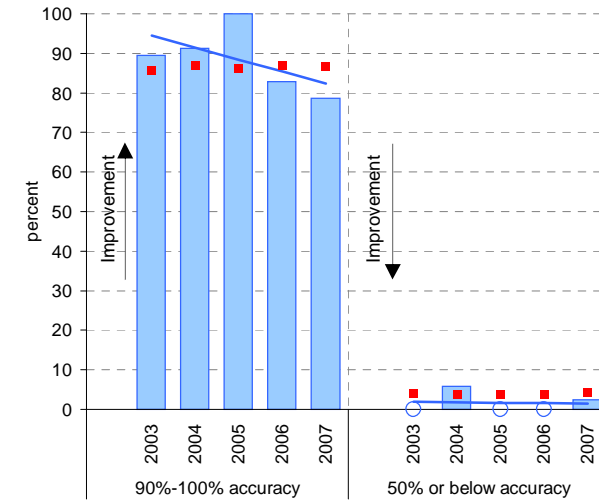
Notes: * The school trendline is being trialled. It is only plotted when there is data for each calendar year.

^ This data is highly skewed, with a lot of schools obtaining the best possible result, particularly in Year 2. The maximum achievable percentile is therefore significantly less than 100.

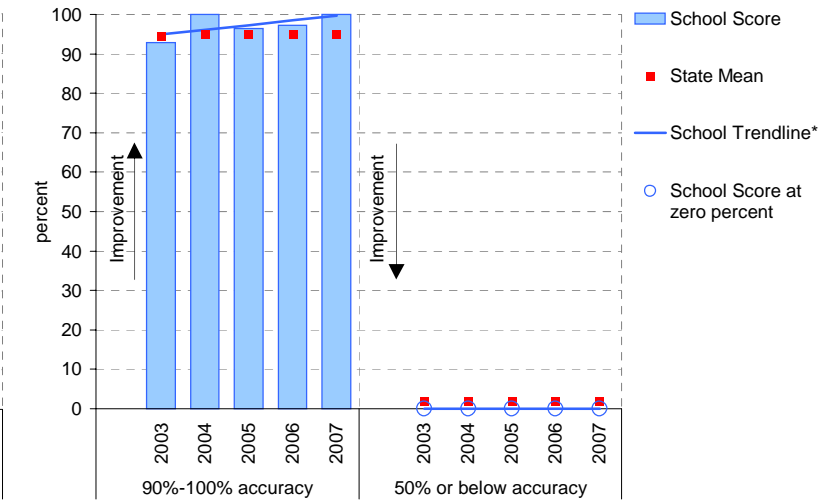
Year level: Prep
Text level: Level 5



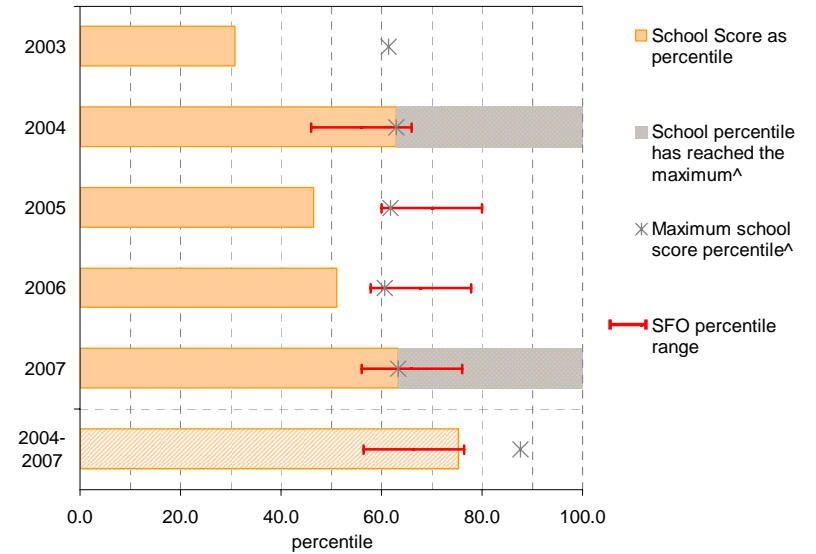
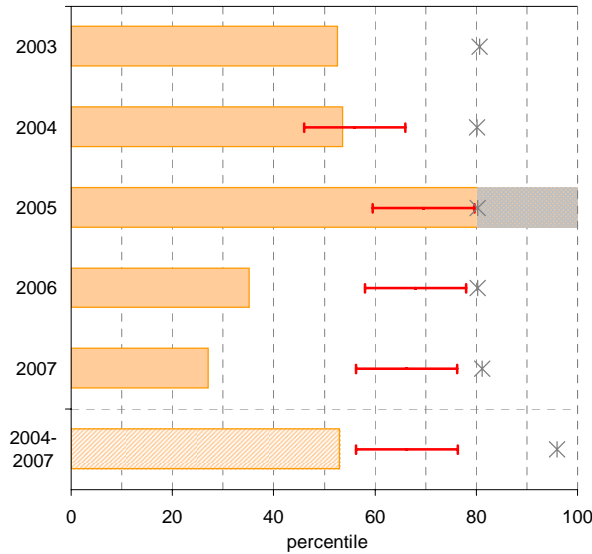
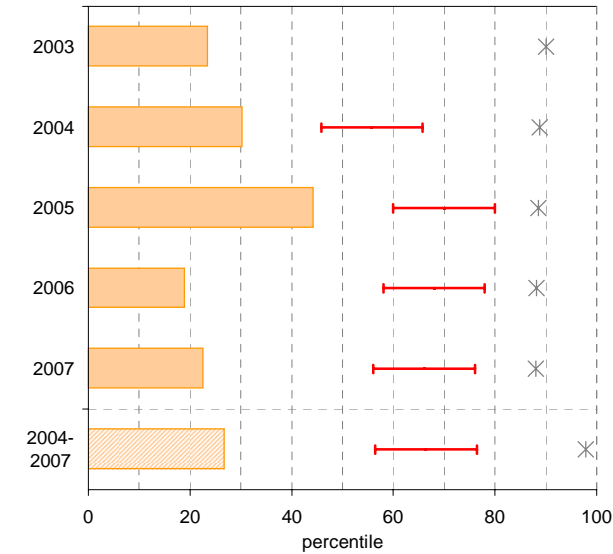
Year level: Year 1
Text level: Level 15



Year level: Year 2
Text level: Level 20



90%-100% accuracy as percentile against SFO percentile range



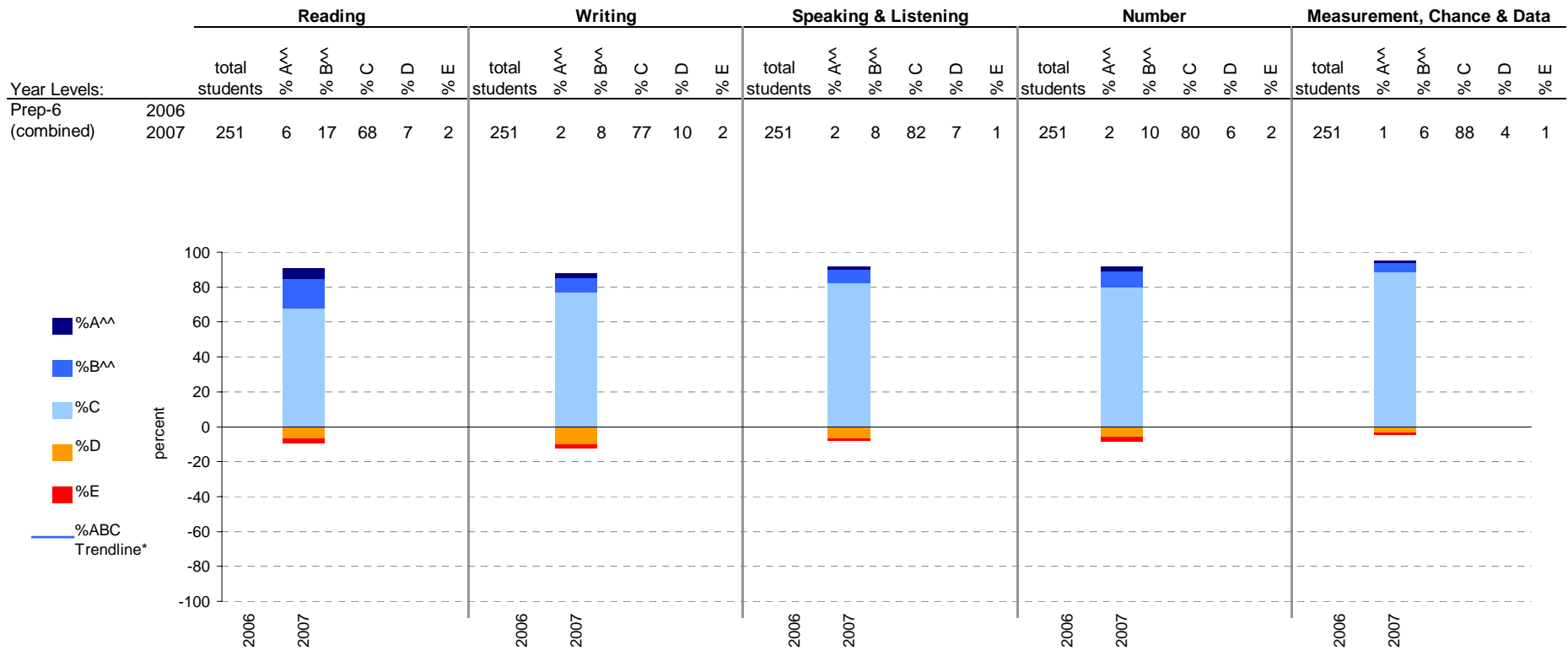
Teacher Judgments against the VELS - Year levels Prep-6 combined

School no: 652

School name: Winters Flat Primary School

Source of data: Data retrieved electronically from CASES21.

Explanation: Teacher judgments of student progress against the VELS.



Notes: * The school trendline is being trialled. It is only plotted when there is data for each calendar year.
 ^^ The cutoff between grades A and B changed in 2007. Further information is available on the following website:
<http://www.education.vic.gov.au/studentlearning/studentreports/schools/whatsnew.htm>.

Teacher Judgments against the VELS - English (primary)

School no: 652

School name: Winters Flat Primary School

Source of data: Data retrieved electronically from CASES21.

Explanation: Teacher judgments of student progress against the VELS.

Notes: * The school trendline is being trialled. It is only plotted when there is data for each calendar year.

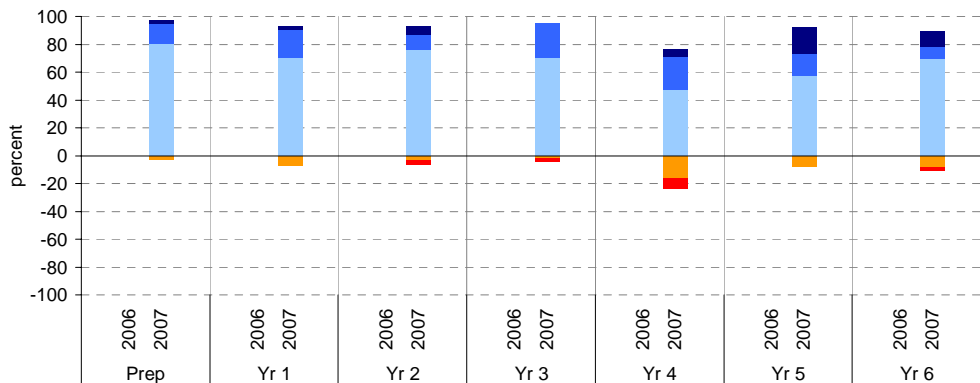
** In 2006, approx. 850 schools assessed their students against the 0.25 VELS scale. 2006 benchmarks are therefore based on a subset of schools. 2007 benchmarks will be calculated in August, when data from all schools has been submitted.

^ Percentiles for 2007 will be calculated in August, when data from all schools has been submitted.

^^ The cutoff between grades A and B changed in 2007. Further information is available on the following website: <http://www.education.vic.gov.au/studentlearning/studentreports/schools/whatsnew.htm>.

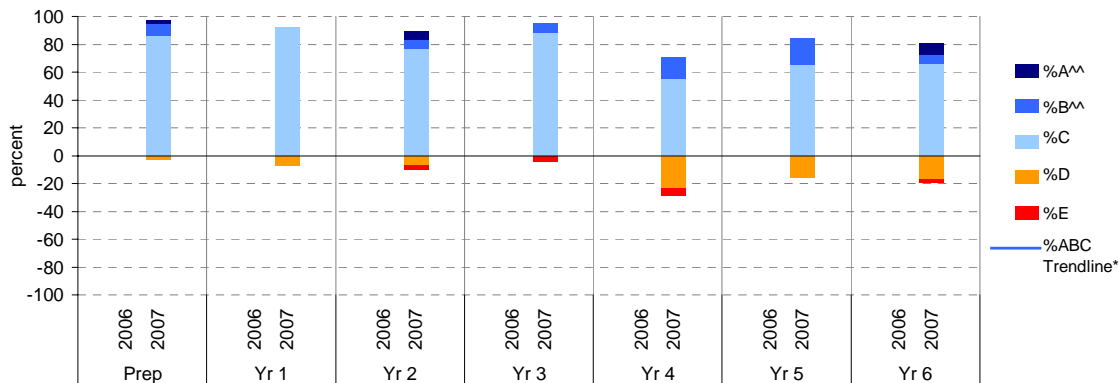
Reading

	total students	% of students by grade					Mean Score		
		A ^{^^}	B ^{^^}	C	D	E	School	State ^{**}	
Yr 4	2006								2.96
	2007	36	3	14	81	3	0	0.92	1.01
Yr 5	2006								3.44
	2007	41	2	20	71	7	0	1.51	1.57
Yr 6	2006								3.94
	2007	30	7	10	77	3	3	1.97	2.04
Yr 3	2006								2.49
	2007	44	0	25	70	2	2	2.49	2.49



Writing

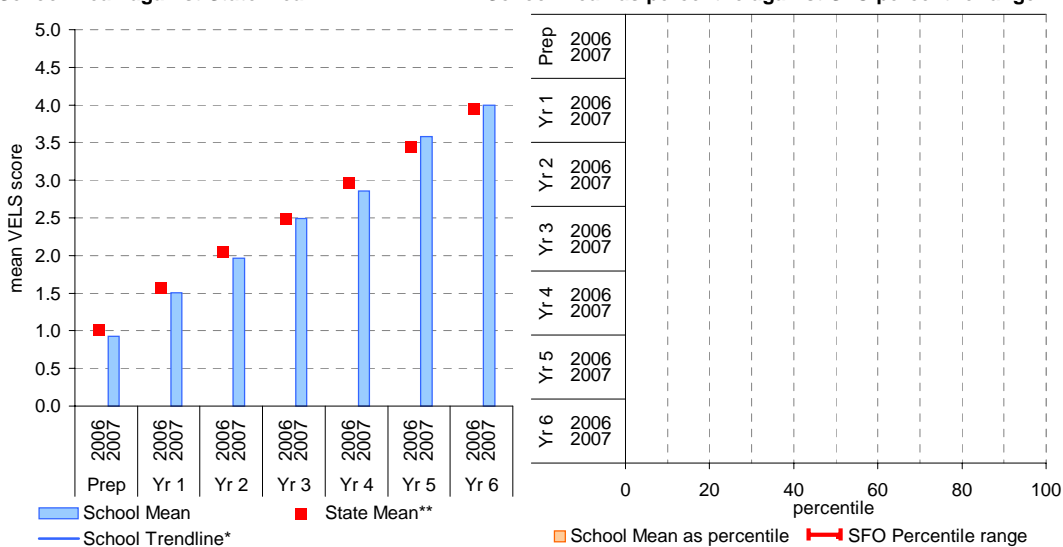
	total students	% of students by grade					Mean Score		
		A ^{^^}	B ^{^^}	C	D	E	School	State ^{**}	
Yr 4	2006								2.89
	2007	36	3	8	86	3	0	0.87	0.97
Yr 5	2006								3.38
	2007	41	0	0	93	7	0	1.43	1.47
Yr 6	2006								3.88
	2007	26	0	19	65	15	0	3.42	3.42
Yr 3	2006								2.42
	2007	30	7	7	77	7	3	1.95	1.95
Yr 2	2006								2.42
	2007	44	0	7	89	0	5	2.42	2.42



Reading

School Mean against State Mean

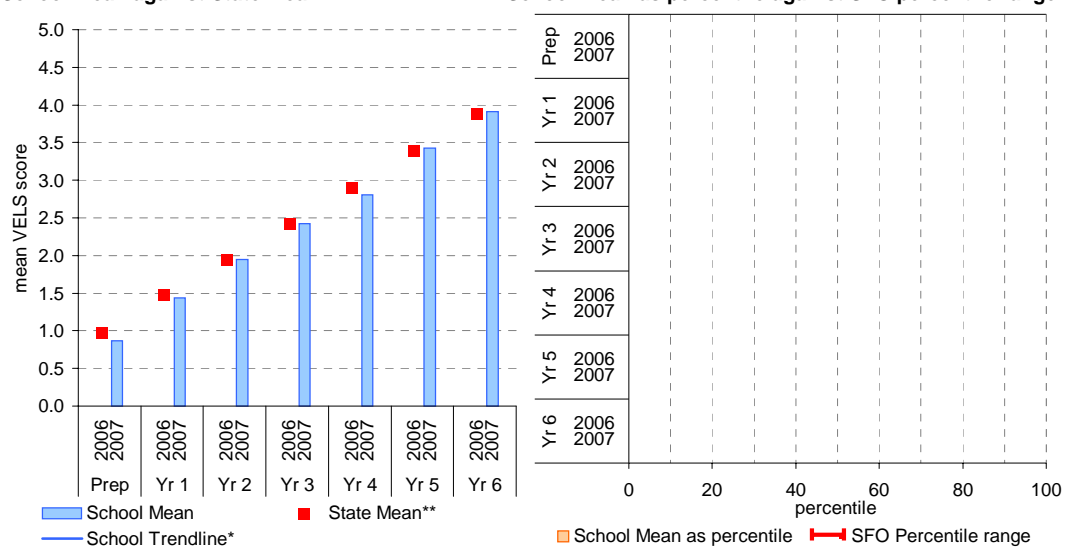
School Mean as percentile against SFO percentile range[^]



Writing

School Mean against State Mean

School Mean as percentile against SFO percentile range[^]



Teacher Judgments against the VELS - English (primary)

School no: 652

School name: Winters Flat Primary School

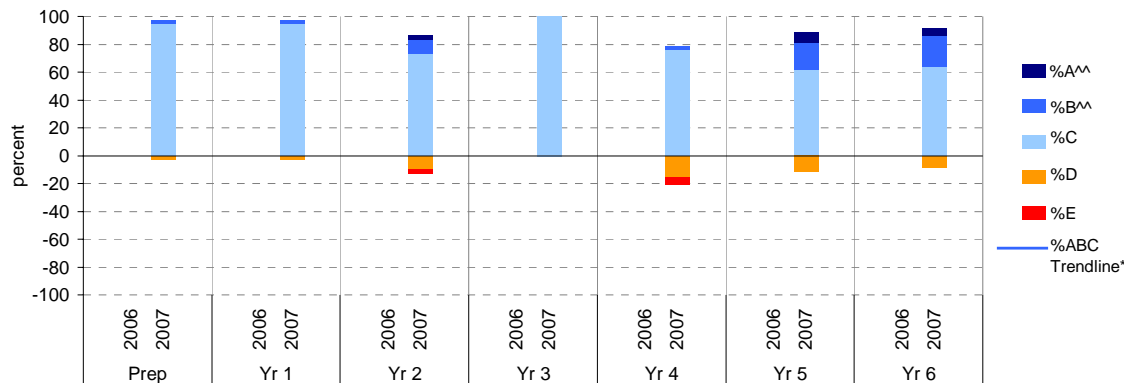
Source of data: Data retrieved electronically from CASES21.

Explanation: Teacher judgments of student progress against the VELS.

Notes: * The school trendline is being trialled. It is only plotted when there is data for each calendar year.
 ** In 2006, approx. 850 schools assessed their students against the 0.25 VELS scale. 2006 benchmarks are therefore based on a subset of schools. 2007 benchmarks will be calculated in August, when data from all schools has been submitted.
 ^ Percentiles for 2007 will be calculated in August, when data from all schools has been submitted.
 ^^ The cutoff between grades A and B changed in 2007. Further information is available on the following website:
<http://www.education.vic.gov.au/studentlearning/studentreports/schools/whatsnew.htm>.

Speaking and Listening

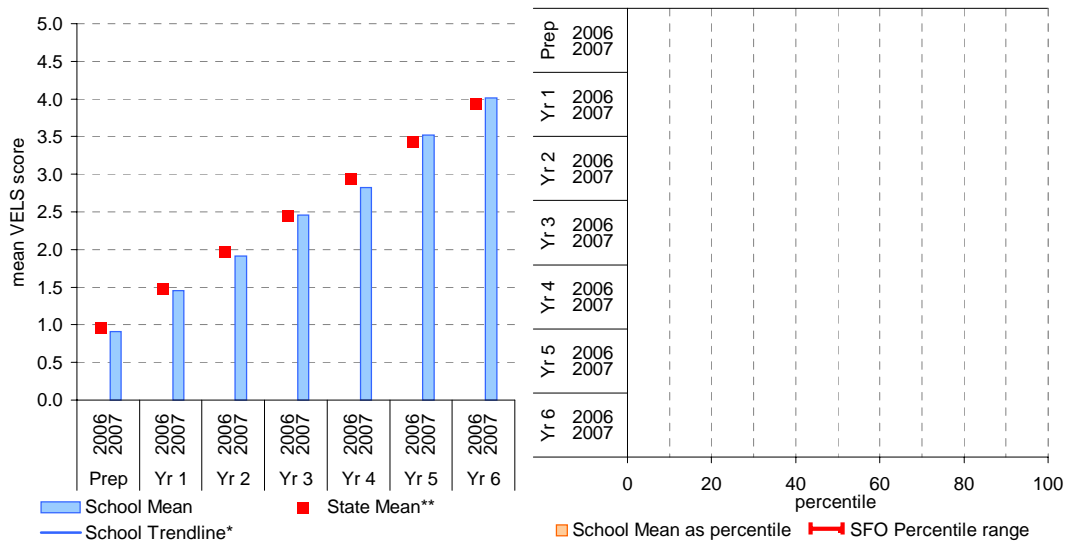
	total students	% of students by grade					Mean Score			total students	% of students by grade					Mean Score	
		A^^	B^^	C	D	E	School	State**			A^^	B^^	C	D	E	School	State**
Prep	2006						0.91	0.97	Yr 4	2006						2.82	2.94
	2007	36	0	3	94	3	0			2007	38	0	3	76	16	5	
Yr 1	2006						1.45	1.48	Yr 5	2006						3.52	3.43
	2007	41	0	2	95	2	0			2007	26	8	19	62	12	0	
Yr 2	2006						1.92	1.98	Yr 6	2006						4.01	3.93
	2007	30	3	10	73	10	3			2007	36	6	22	64	8	0	
Yr 3	2006						2.46	2.45									
	2007	44	0	0	100	0	0										



Speaking and Listening

School Mean against State Mean

School Mean as percentile against SFO percentile range^



Teacher Judgments against the VELS - Mathematics (primary)

School no: 652

School name: Winters Flat Primary School

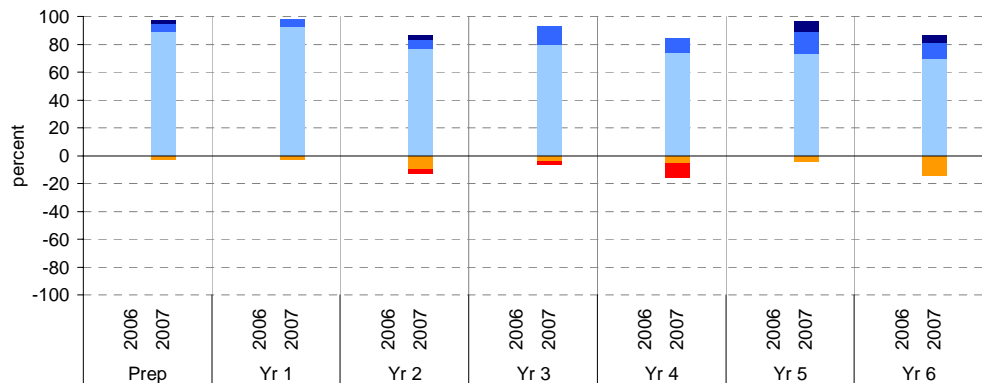
Source of data: Data retrieved electronically from CASES21.

Explanation: Teacher judgments of student progress against the VELS.

Notes: * The school trendline is being trialled. It is only plotted when there is data for each calendar year.
 ** In 2006, approx. 850 schools assessed their students against the 0.25 VELS scale. 2006 benchmarks are therefore based on a subset of schools. 2007 benchmarks will be calculated in August, when data from all schools has been submitted.
 ^ Percentiles for 2007 will be calculated in August, when data from all schools has been submitted.
 ^^ The cutoff between grades A and B changed in 2007. Further information is available on the following website:
<http://www.education.vic.gov.au/studentlearning/studentreports/schools/whatsnew.htm>.

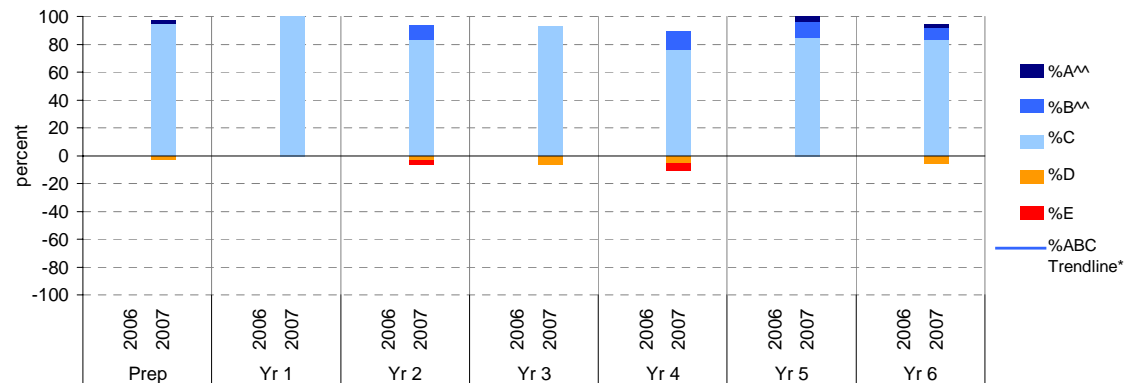
Number

	total students	% of students by grade					Mean Score			total students	% of students by grade					Mean Score		
		A^	B^	C	D	E	School	State**			A^	B^	C	D	E	School	State**	
Yr 4	2006							1.00		2006							2.95	
	2007	36	3	6	89	3	0	0.99	1.00	2007	38	0	11	74	5	11	2.83	2.94
Yr 5	2006							1.51		2006							3.43	
	2007	41	0	5	93	2	0	1.48	1.51	2007	26	8	15	73	4	0	3.50	3.42
Yr 6	2006							1.99		2006							3.93	
	2007	30	3	7	77	10	3	1.91	1.99	2007	36	6	11	69	14	0	3.95	3.92
Yr 3	2006							2.46		2006							2.45	
	2007	44	0	14	80	5	2	2.41	2.46	2007	44	0	0	93	7	0	2.45	2.45



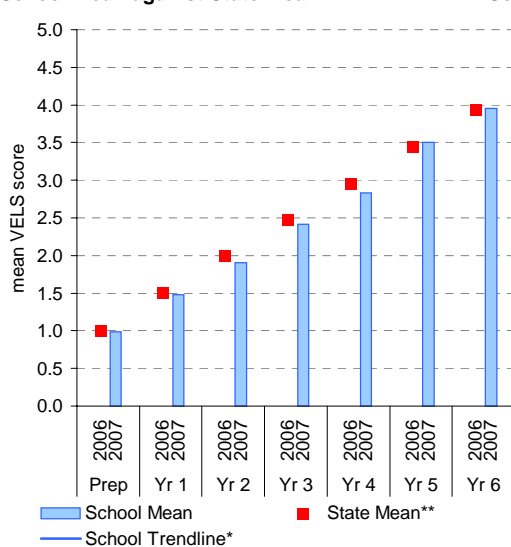
Measurement, Chance and Data

	total students	% of students by grade					Mean Score			total students	% of students by grade					Mean Score		
		A^	B^	C	D	E	School	State**			A^	B^	C	D	E	School	State**	
Yr 4	2006							0.97		2006							2.94	
	2007	36	3	0	94	3	0	0.99	0.97	2007	38	0	13	76	5	5	2.93	2.94
Yr 5	2006							1.48		2006							3.42	
	2007	41	0	0	100	0	0	1.48	1.48	2007	26	4	12	85	0	0	3.52	3.42
Yr 6	2006							1.97		2006							3.92	
	2007	30	3	7	77	10	3	1.92	1.97	2007	36	3	8	83	6	0	3.99	3.92
Yr 3	2006							2.45		2006							2.45	
	2007	44	0	0	93	7	0	2.45	2.45	2007	44	0	0	93	7	0	2.45	2.45

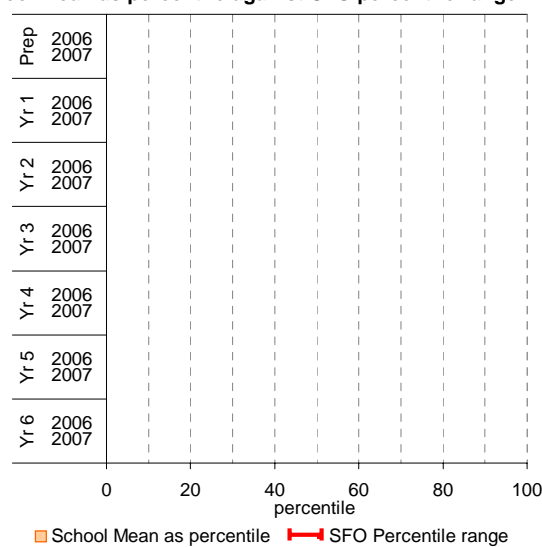


Number

School Mean against State Mean

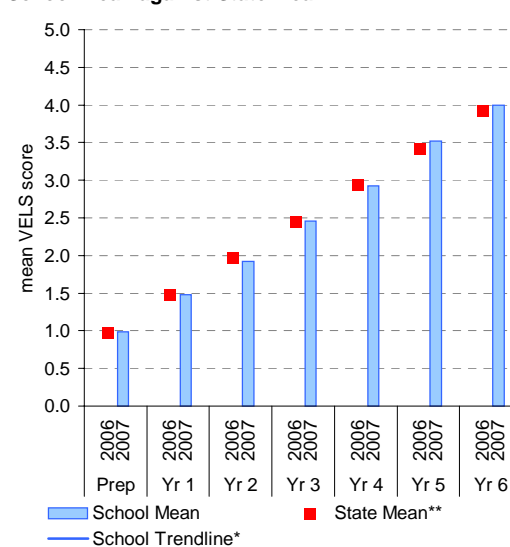


School Mean as percentile against SFO percentile range^

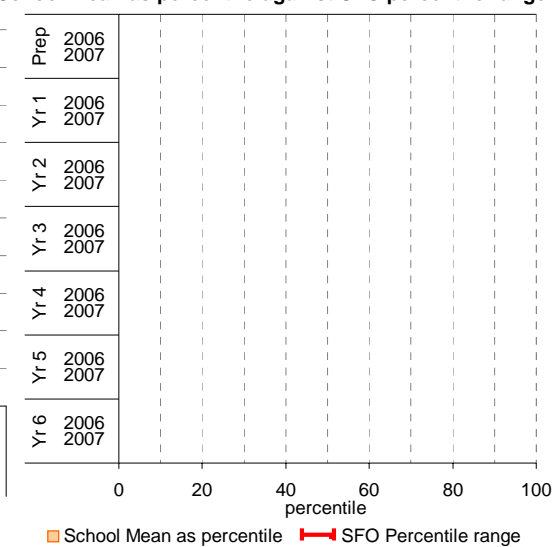


Measurement, Chance and Data

School Mean against State Mean



School Mean as percentile against SFO percentile range^



AIM Year 3 and 5: Reading

School no: 652

School name: Winters Flat Primary School

Source of data: Victorian Curriculum and Assessment Authority.

Explanation: The Achievement Improvement Monitor (AIM) is a statewide assessment program conducted each year for students in Years 3, 5, 7 and 9. For more detailed AIM data, refer to the AIM Data Service website at <http://aimds.vcaa.vic.edu.au>.

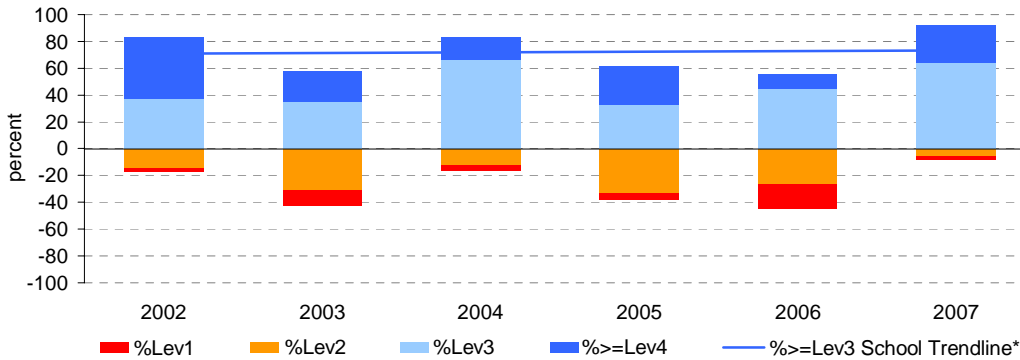
Notes: * The school trendline is being trialled. It is only plotted when there is data for each calendar year.

** % student participation = (students who participated in AIM / Feb enrolments) * 100

Year 3

	student participation		% of students by VELs level							Mean CSF / VELs Score	
	(n)	(%)**	Lev1	Lev2	Lev3	Lev4	Lev5	Lev6	Lev6E	School	State
2002	35	109	3	14	37	46	0	0	0	2.7	2.4
2003	26	100	12	31	35	23	0	0	0	2.2	2.3
2004	24	83	4	13	67	17	0	0	0	2.5	2.3
2005	21	95	5	33	33	29	0	0	0	2.3	2.4
2006	27	87	19	26	44	11	0	0	0	2.1	2.3
2007	36	82	3	6	64	28	0	0	0	2.7	2.3

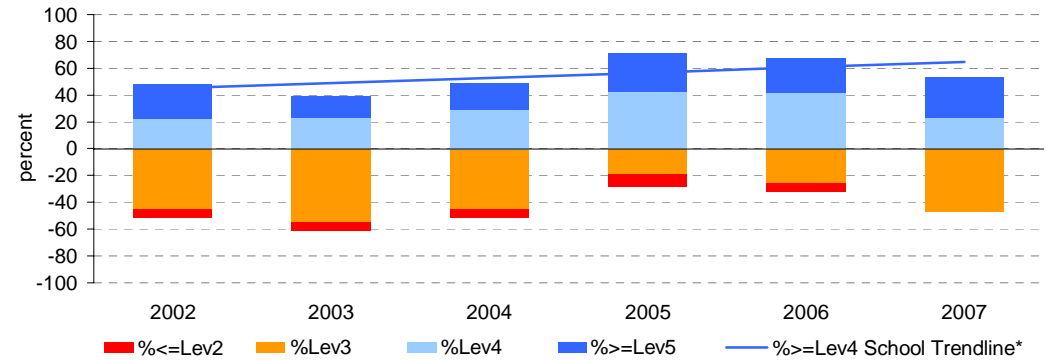
Proportion of students by VELs level



Year 5

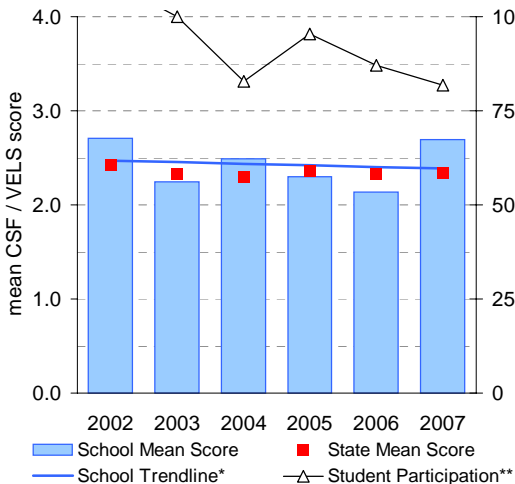
	student participation		% of students by VELs level							Mean CSF / VELs Score	
	(n)	(%)**	Lev1	Lev2	Lev3	Lev4	Lev5	Lev6	Lev6E	School	State
2002	31	91	0	6	45	23	26	0	0	3.2	3.1
2003	31	82	0	6	55	23	16	0	0	3.0	3.2
2004	31	100	0	6	45	29	19	0	0	3.2	3.2
2005	21	81	0	10	19	43	29	0	0	3.3	3.2
2006	31	103	0	6	26	42	26	0	0	3.4	3.1
2007	26	96	0	0	46	23	31	0	0	3.2	3.2

Proportion of students by VELs level

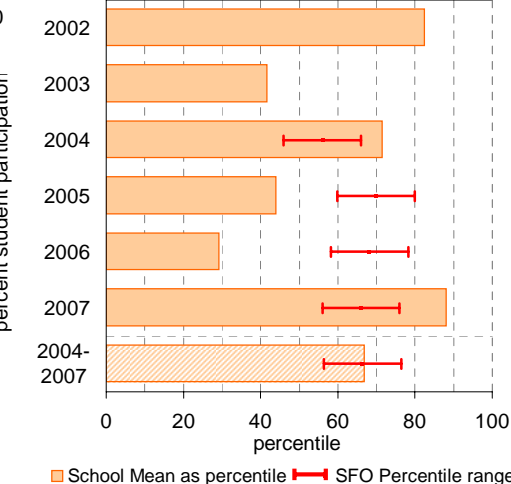


Year 3

School Mean against State Mean, including Participation

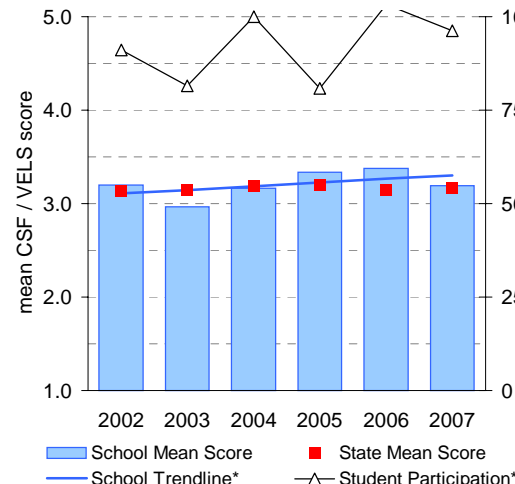


School Mean as percentile against SFO percentile range

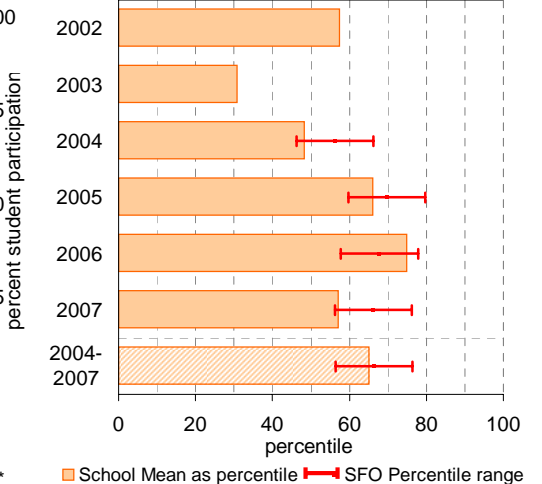


Year 5

School Mean against State Mean, including Participation



School Mean as percentile against SFO percentile range



AIM Year 3 and 5: Number

School no: 652

School name: Winters Flat Primary School

Source of data: Victorian Curriculum and Assessment Authority.

Explanation: The Achievement Improvement Monitor (AIM) is a statewide assessment program conducted each year for students in Years 3, 5, 7 and 9. For more detailed AIM data, refer to the AIM Data Service website at <http://aimds.vcaa.vic.edu.au>.

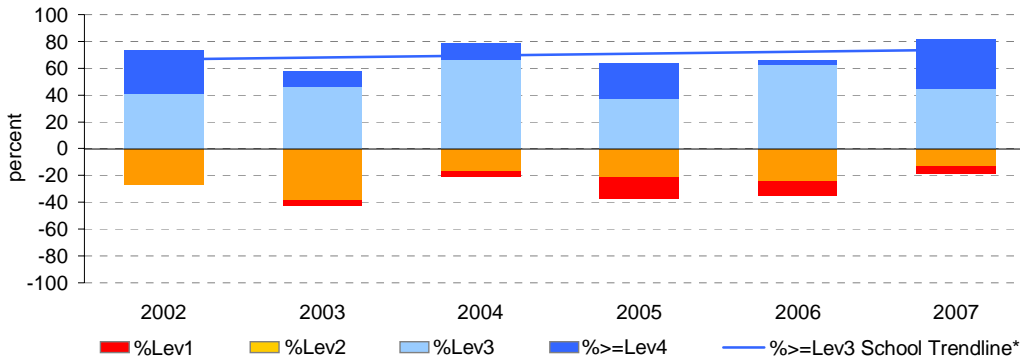
Notes: * The school trendline is being trialled. It is only plotted when there is data for each calendar year.

** % student participation = (students who participated in AIM / Feb enrolments) * 100

Year 3

	student participation		% of students by VELs level							Mean CSF / VELs Score	
	(n)	(%)**	Lev1	Lev2	Lev3	Lev4	Lev5	Lev6	Lev6E	School	State
2002	34	106	0	26	41	32	0	0	0	2.6	2.4
2003	26	100	4	38	46	12	0	0	0	2.3	2.4
2004	24	83	4	17	67	13	0	0	0	2.4	2.4
2005	19	86	16	21	37	26	0	0	0	2.1	2.4
2006	29	94	10	24	62	3	0	0	0	2.1	2.4
2007	38	86	5	13	45	37	0	0	0	2.6	2.4

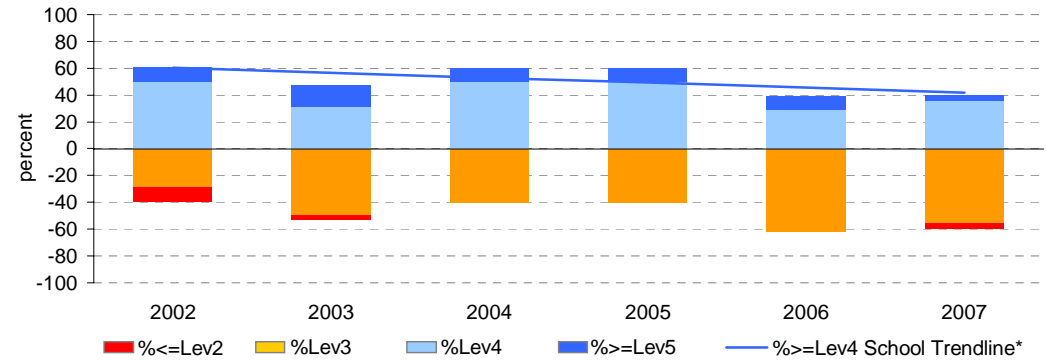
Proportion of students by VELs level



Year 5

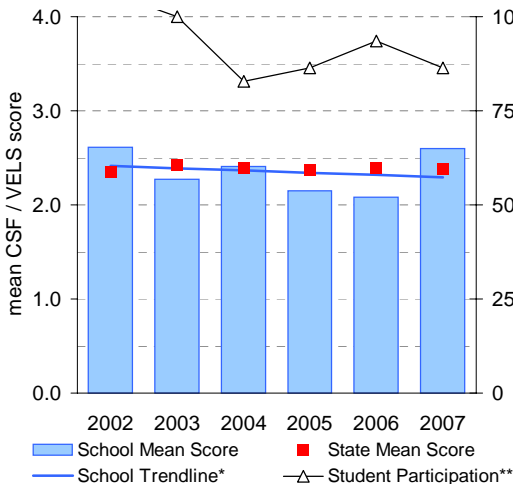
	student participation		% of students by VELs level							Mean CSF / VELs Score	
	(n)	(%)**	Lev1	Lev2	Lev3	Lev4	Lev5	Lev6	Lev6E	School	State
2002	28	82	0	11	29	50	11	0	0	3.2	3.3
2003	32	84	0	3	50	31	16	0	0	3.1	3.1
2004	30	97	0	0	40	50	10	0	0	3.1	3.2
2005	20	77	0	0	40	50	10	0	0	3.2	3.2
2006	31	103	0	0	61	29	10	0	0	3.1	3.2
2007	25	93	0	4	56	36	4	0	0	2.9	3.2

Proportion of students by VELs level

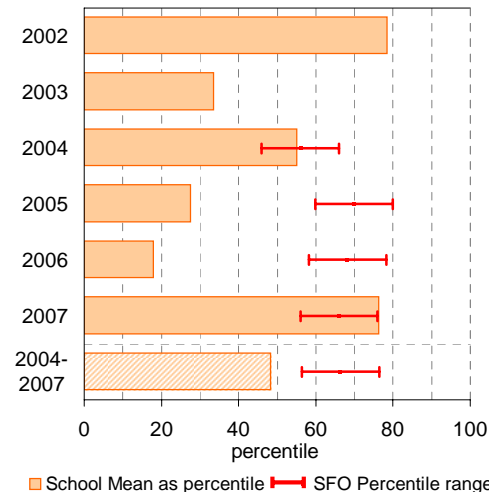


Year 3

School Mean against State Mean, including Participation

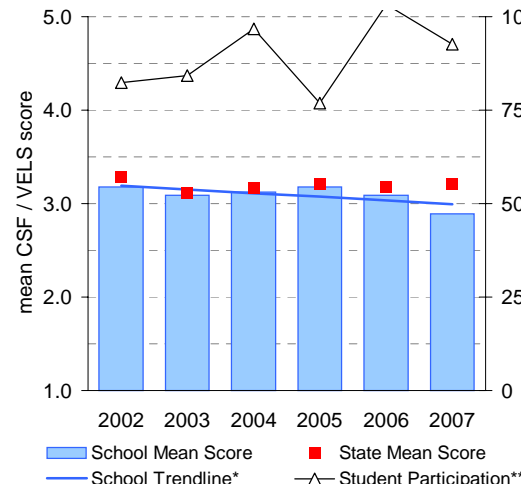


School Mean as percentile against SFO percentile range

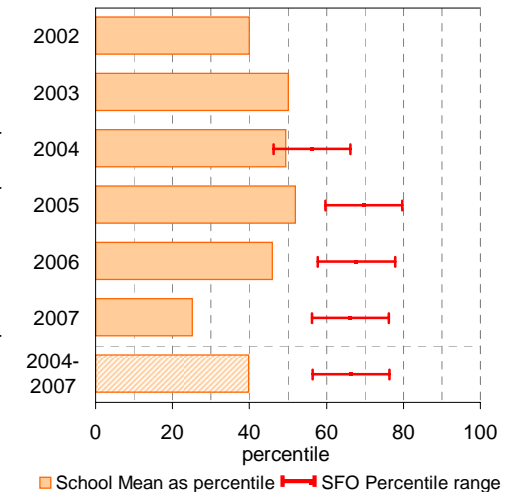


Year 5

School Mean against State Mean, including Participation



School Mean as percentile against SFO percentile range



Teacher Assessment of Student Progress (PSD students)

School no: 652

School name: Winters Flat Primary School

Explanation: Teachers assess their students' progress against the 8 VELs Domains / CSF KLAs using a 6-point scale (students in special schools and those who cannot be assessed against the VELs / CSF).

Source of data: Data transmitted from school to DEECD via an online web-form.

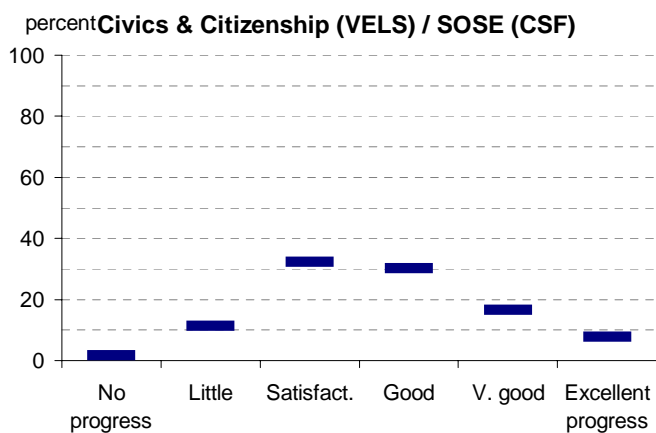
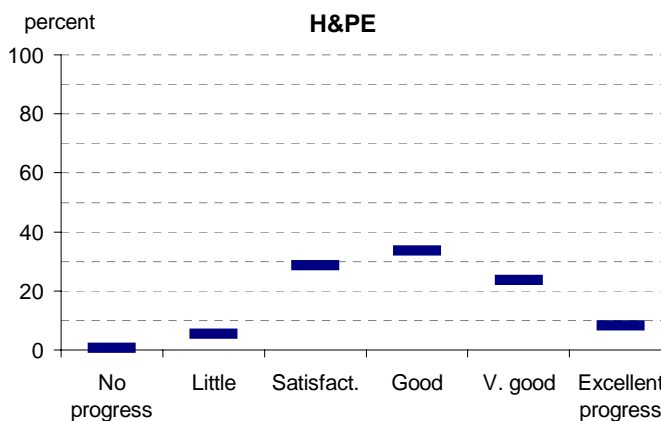
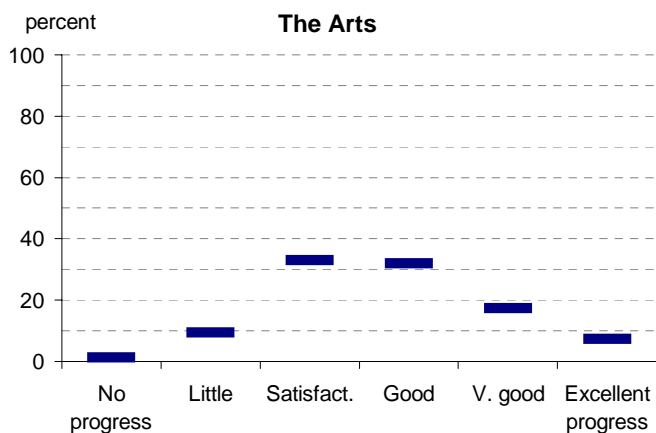
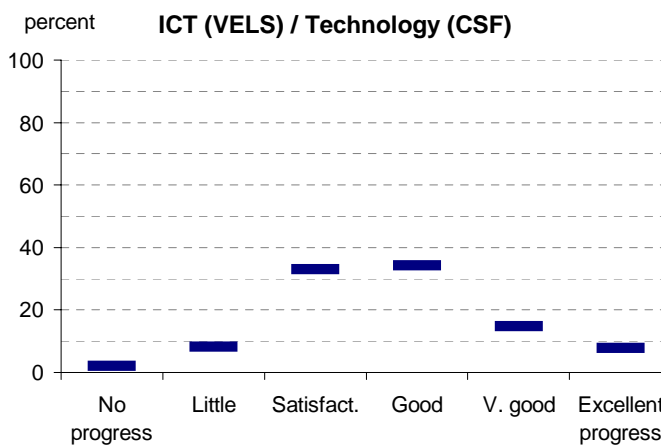
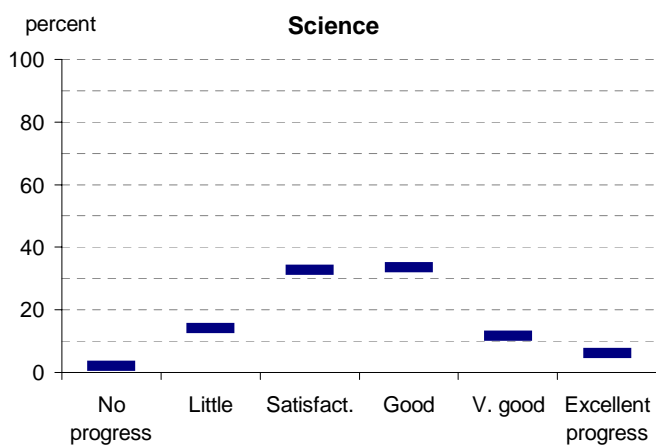
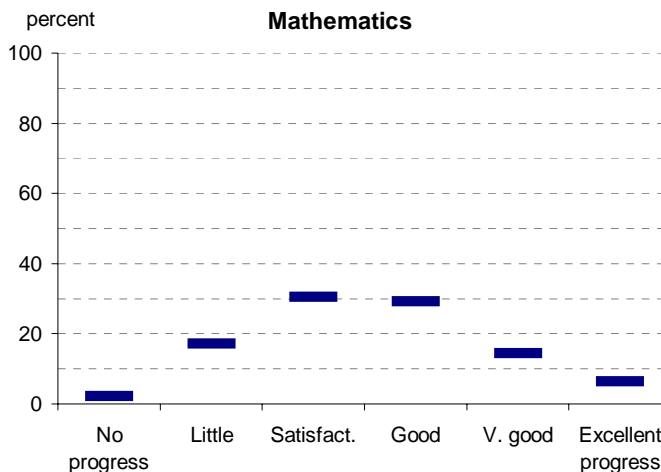
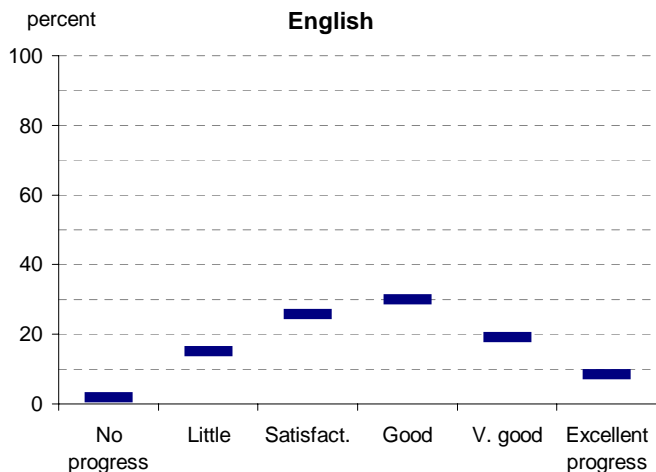
	No progress (%)	Little progress (%)	Satisfactory progress (%)	Good progress (%)	Very good progress (%)	Excellent progress (%)	Total students assessed ¹ (no.)
2003 (by CSF KLA)							
English							
Mathematics							
Science							
Technology							
The Arts							
H&PE							
SOSE							
2004 (by CSF KLA)							
English							
Mathematics							
Science							
Technology							
The Arts							
H&PE							
SOSE							
2005 (by CSF KLA)							
English							
Mathematics							
Science							
Technology							
The Arts							
H&PE							
SOSE							
2006 (by VELs Domain)							
English							
Mathematics							
Science							
Technology							
The Arts							
H&PE							
SOSE							
2007 (by VELs Domain)							
English							
Mathematics							
Science							
ICT							
The Arts							
H&PE							
Civics & Citizenship							
2006 Primary state benchmarks (by VELs Domain)*							
English	2	15	26	30	19	8	
Mathematics	2	17	30	29	14	6	
Science	2	14	33	33	12	6	
Technology	2	8	33	34	15	8	
The Arts	1	9	33	32	17	7	
H&PE	1	5	29	34	24	8	
SOSE	2	11	32	30	17	8	

Notes: ¹ If schools provided percentages only, it is not possible to report the number of students assessed. In these cases, the total percentage (100) will be shown.

* 2007 benchmarks will be calculated in August, when data from all schools has been submitted.

Teacher Assessment of Student Progress (PSD students)

School no: 652
 School name: Winters Flat Primary School



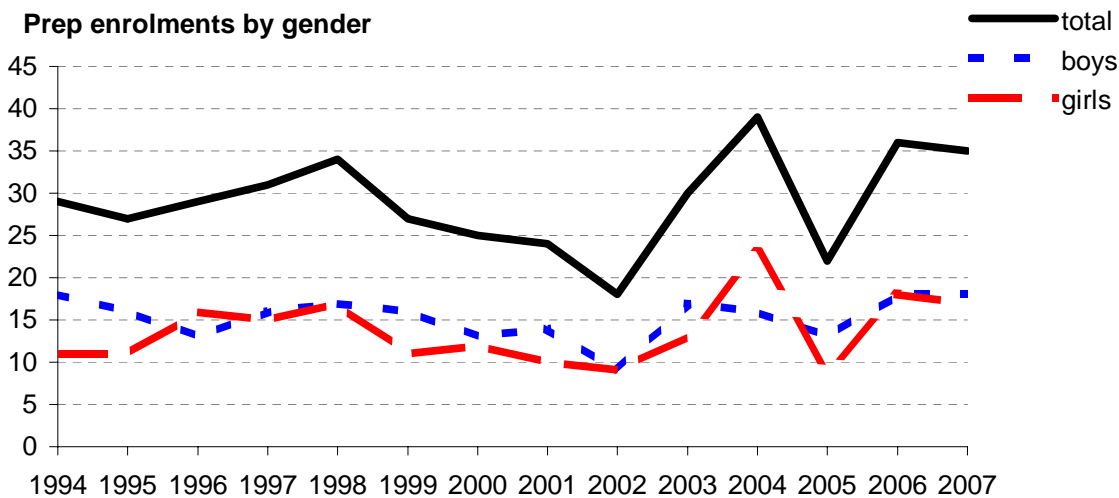
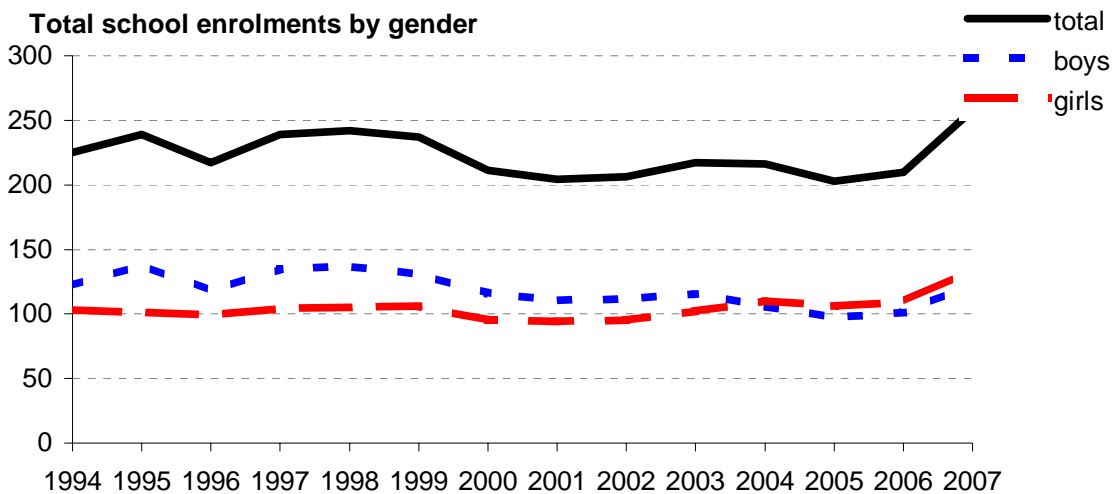
- 2003 (by CSF KLA)
- 2004 (by CSF KLA)
- 2005 (by CSF KLA)
- 2006 (by VELS Domain)
- 2007 (by VELS Domain)
- 2006 Primary state benchmarks (by VELS Domain)*

Notes: * 2007 benchmarks will be calculated in August, when data from all schools has been submitted.

Enrolments

School no: 652
School name: Winters Flat Primary School
Explanation: Enrolments at February census.
Source of data: February census.

Year	Total school enrolment			Prep enrolment			Year 7 enrolments		
	boys	girls	total	boys	girls	total	boys	girls	total
1994	122	103	225	18	11	29			
1995	138	101	239	16	11	27			
1996	118	99	217	13	16	29			
1997	135	104	239	16	15	31			
1998	137	105	242	17	17	34			
1999	131	106	237	16	11	27			
2000	116	95	211	13	12	25			
2001	110	94	204	14	10	24			
2002	111	95	206	9	9	18			
2003	115	102	217	17	13	30			
2004	106	110	216	16	23	39			
2005	97	106	203	13	9	22			
2006	101	109	210	18	18	36			
2007	123	135	258	18	17	35			



Student Absence

School no: 652

School name: Winters Flat Primary School

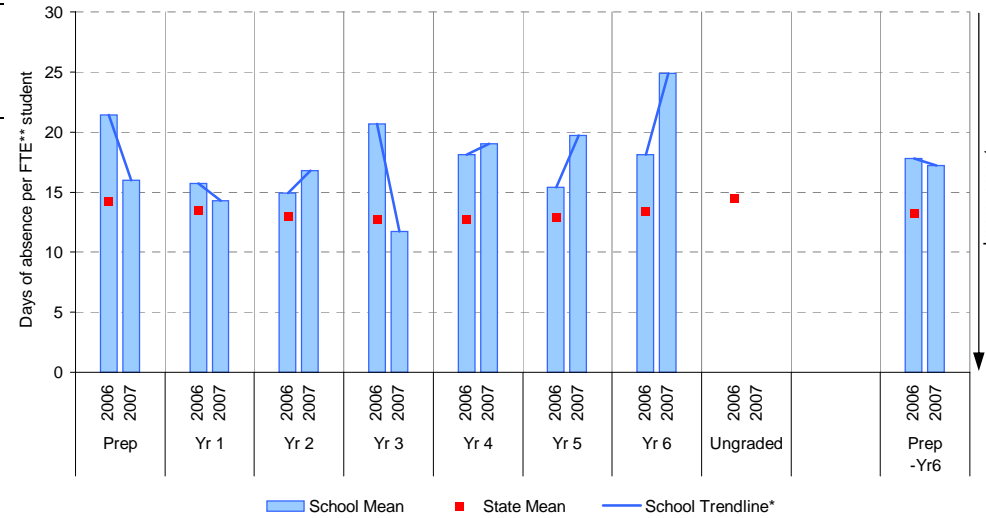
Source of data: Data retrieved electronically from CASES21.

Explanation: The average (mean) number of absent days† per student. Up to 2006, the formula used to calculate the average number of absent days per student was based on student headcount. From 2006, the formula was based on FTE** students. The new formula provides a more accurate summary of student absence. For 2006, student absence is provided for both student headcount and FTE student. Note that 20 absent days equates to 1 absent day per fortnight, and 10 absent days to 1 absent day per month.

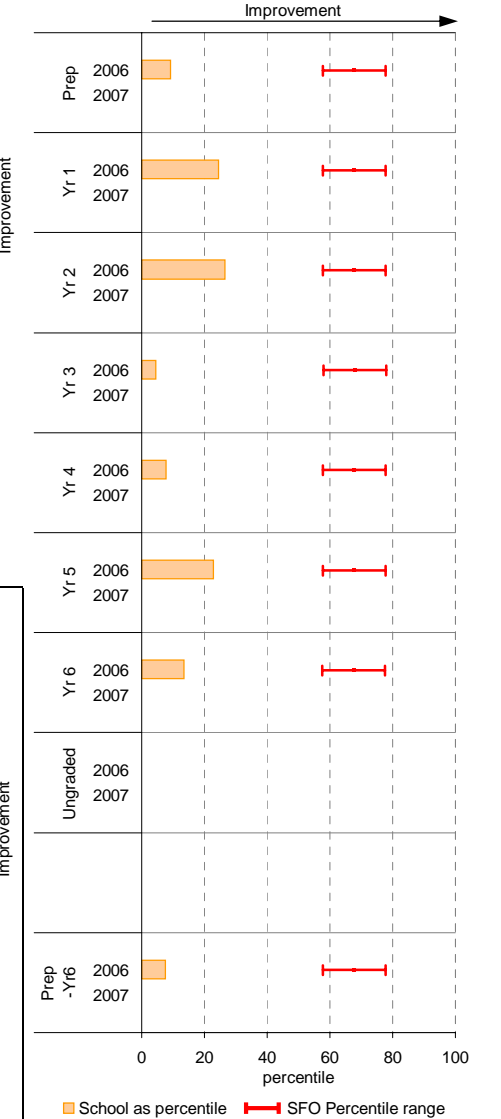
Student Absence (by FTE** student, 2006 and onward)

	School		2006 state benchmark^				
	2006	2007	25th ptile	Mean	75th ptile		
	Enrolments	Avg absent days / FTE** student	Enrolments	Avg absent days / FTE** student			
Prep	38.3	21.4	34.4	16	11.6	14.3	17.1
Yr 1	28.4	15.7	41.9	14.3	11.3	13.4	15.6
Yr 2	38.1	14.9	29.9	16.8	10.7	13.0	15.1
Yr 3	34.2	20.7	43.8	11.7	10.7	12.7	14.8
Yr 4	24.1	18.1	39.9	19	10.6	12.7	14.7
Yr 5	32.3	15.4	25.8	19.7	10.8	12.9	15.2
Yr 6	25.7	18.1	36.6	24.9	11.0	13.4	15.8
Ungraded						14.5	
P-6 mean		17.8		17.2		13.2	

School Mean against State Mean^



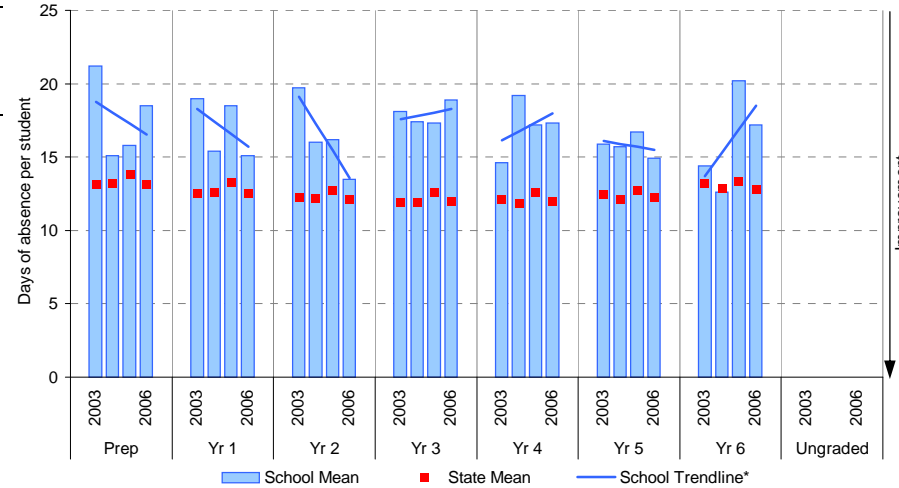
School Mean as percentile against SFO percentile range^



Student Absence (by student headcount, 2003-2006)

	School							
	2003	2004	2005	2006				
	Enrolments	Avg absent days / student	Enrolments	Avg absent days / student	Enrolments	Avg absent days / student	Enrolments	Avg absent days / student
Prep	35	21.2	42	15.1	25	15.8	42	18.5
Yr 1	19	19	37	15.4	41	18.5	29	15.1
Yr 2	34	19.7	20	16	34	16.2	42	13.5
Yr 3	31	18.1	31	17.4	24	17.3	38	18.9
Yr 4	38	14.6	29	19.2	30	17.2	25	17.3
Yr 5	41	15.9	32	15.7	29	16.7	33	14.9
Yr 6	39	14.4	39	12.6	34	20.2	27	17.2
Ungraded								
P-6 mean		17.3		15.7		17.6		16.5

School Mean against State Mean



Improvement

Notes: † Includes non-curriculum absences only (absence codes 200, 201, 202, 203, 205, 206, 207, 208, 209, 210, 211, 300, 401, 500, 700, 800, 804, 805, 900).

* The school trendline is being trialled. It is only plotted when there is data for each calendar year.

** FTE = Full Time Equivalent (including part-time and part-year fractions).

^ 2007 benchmarks will be calculated in August, when data from all schools has been submitted.

Parent Opinion

School no: 652

School name: Winters Flat Primary School

Explanation: A self-completion questionnaire to obtain parents' opinions of the school. Parents rated a number of statements using a scale where 1=strongly disagree & 7=strongly agree. The statements were grouped into the following categories.

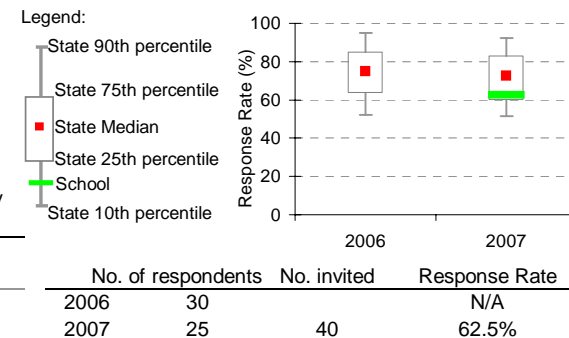
Source of data: Data scanned from questionnaires completed by parents.

Variable No.	Name	Year	School mean	State Primary median
1	School Improvement	2006	5.96	5.71
		2007	5.29	5.75
2	Approachability	2006	6.23	5.81
		2007	5.83	5.82
3	Teacher Morale	2006	6.10	5.82
		2007	5.77	5.86
4	Parent Input	2006	6.00	5.59
		2007	5.34	5.62
5	Stimulating Learning	2006	6.12	5.81
		2007	5.64	5.84
6	Behaviour Management	2006	5.98	5.51
		2007	5.14	5.54
7	Reporting	2006	5.54	5.45
		2007	5.53	5.51

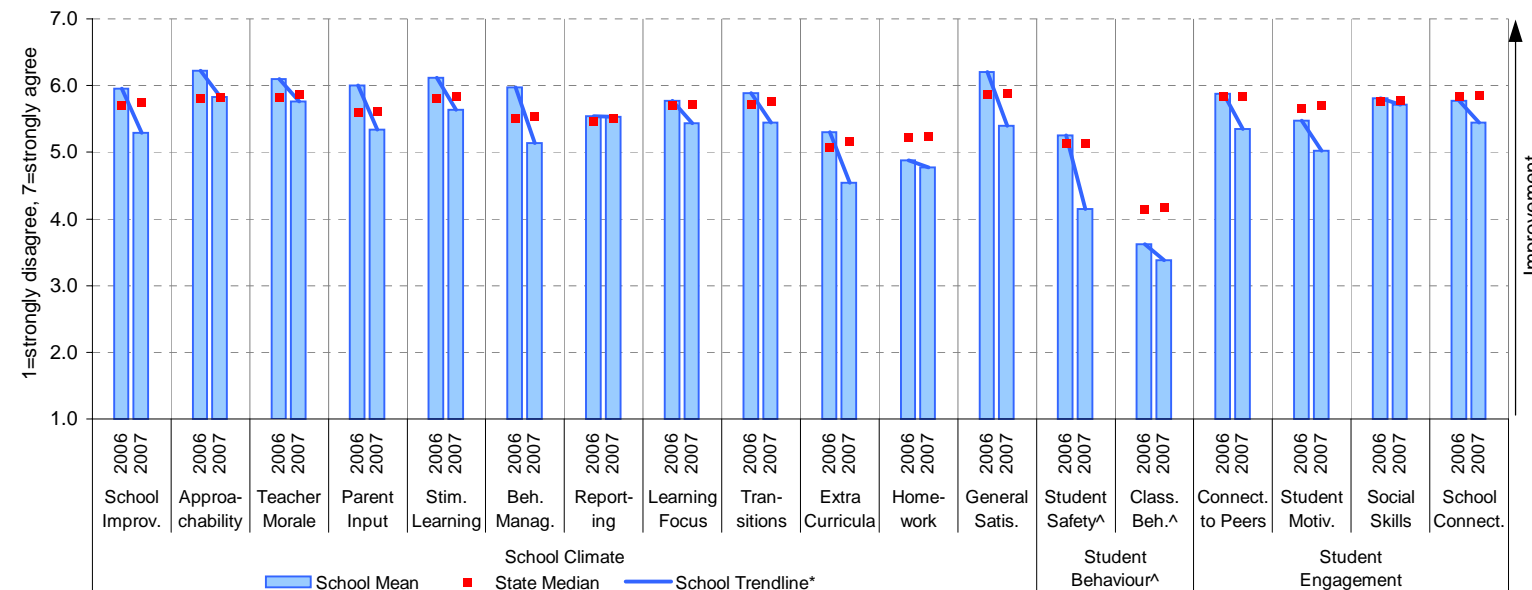
Variable No.	Name	Year	School mean	State Primary median
8	Learning Focus	2006	5.78	5.71
		2007	5.43	5.72
9	Transitions	2006	5.88	5.72
		2007	5.44	5.76
10	Extra Curricula	2006	5.31	5.07
		2007	4.54	5.17
11	Homework	2006	4.88	5.23
		2007	4.78	5.23
12	General Satisfaction	2006	6.20	5.87
		2007	5.40	5.88
13	Student Safety^	2006	5.25	5.13
		2007	4.15	5.12
14	Classroom Behaviour^	2006	3.62	4.15
		2007	3.38	4.18

Variable No.	Name	Year	School mean	State Primary median
15	Connectedness to Peers	2006	5.88	5.83
		2007	5.35	5.83
16	Student Motivation	2006	5.47	5.66
		2007	5.02	5.69
17	Social Skills	2006	5.81	5.76
		2007	5.72	5.78
18	School Connectedness	2006	5.77	5.83
		2007	5.44	5.85

School response rate** against Primary school distribution



School Mean against Primary State Mean



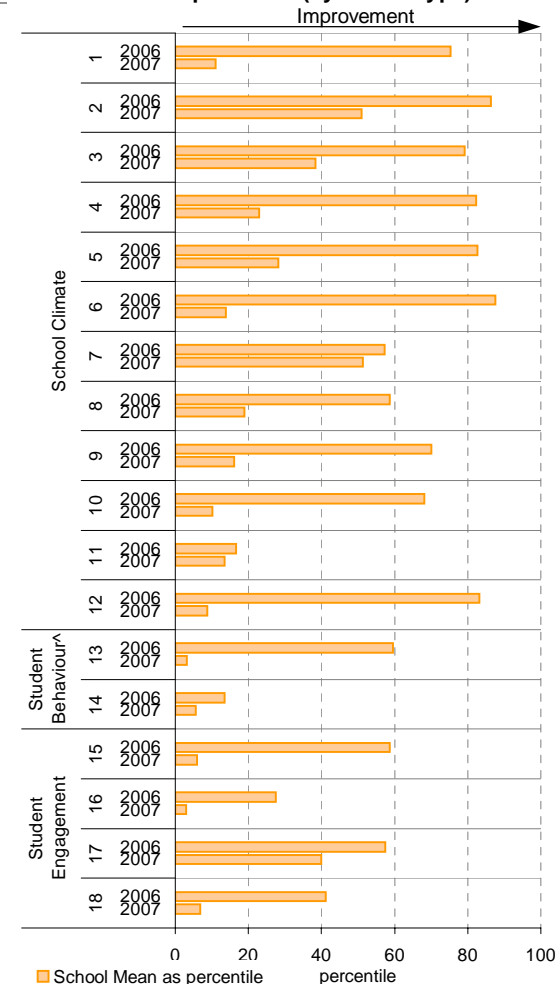
Notes: * The school trendline is being trialled. It is only plotted when there is data for each calendar year.

** If there were 6 or less respondents, table data is not shown for confidentiality reasons. If there were 3 or less respondents, graph data is not shown for confidentiality reasons.

^ Parents' responses to all negatively phrased questions have been reversed for reporting purposes. Across all variables, the higher the score or percentile rank, the more positive parents' perceptions.

^^ Benchmarks available for Primary, Secondary, Pri/Sec, Special and SDS schools.

School Mean as percentile (by school type)



Parent Opinion (pre-2006)

School no: 652

School name: Winters Flat Primary School

Explanation: A self-completion questionnaire to obtain parents' opinions of the school. Parents rated a number of statements using a scale where 1=strongly disagree & 6=strongly agree. The statements were grouped into the following categories.

Source of data: From 2004, data scanned from questionnaires completed by parents.

Year	Number of respondents
2004	91
2005	30

Variable	Year	School Mean	Primary State Mean
Quality of Teaching	2001	5.30	5.18
	2002	5.20	5.21
	2003	5.44	5.20
	2004	5.50	5.24
	2005	5.54	5.28

Variable	Year	School Mean	Primary State Mean
Reporting and Feedback	2004	5.43	5.15
	2005	5.58	5.16
Student Behaviour	2004	5.54	5.40
	2005	5.67	5.44

Variable	Year	School Mean	Primary State Mean
School / Parent Relations	2004	5.65	5.50
	2005	5.72	5.51
Extra-Curricular	2004	5.36	5.08
	2005	5.32	5.07

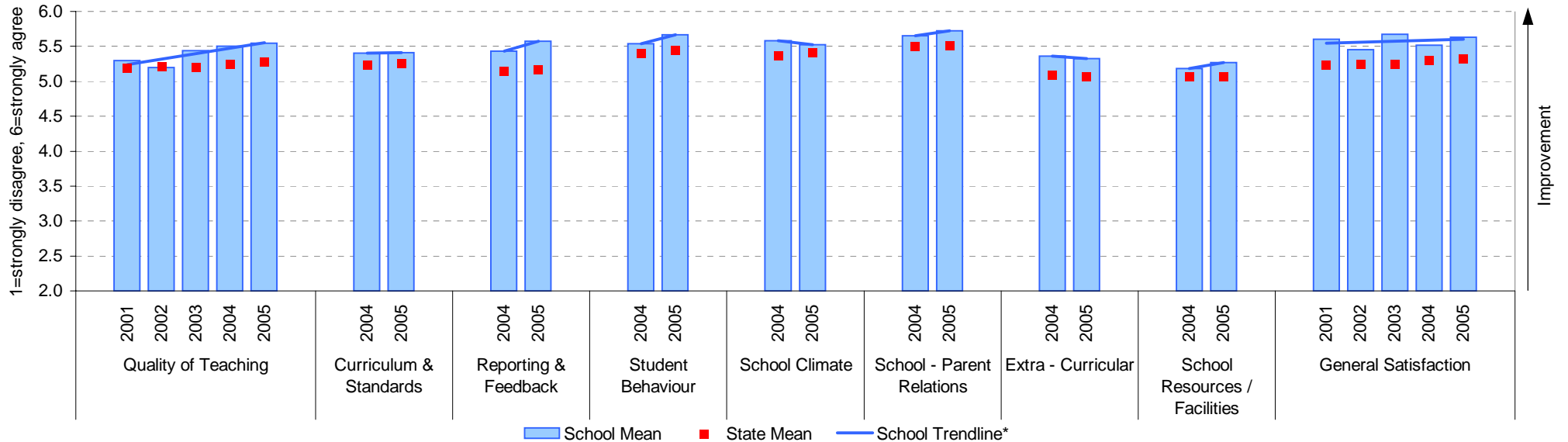
Variable	Year	School Mean	Primary State Mean
General Satisfaction	2001	5.60	5.23
	2002	5.45	5.25
	2003	5.67	5.25
	2004	5.52	5.30
	2005	5.63	5.33

Variable	Year	School Mean	Primary State Mean
Curriculum and Standards	2004	5.40	5.23
	2005	5.41	5.25

Variable	Year	School Mean	Primary State Mean
School Climate	2004	5.58	5.37
	2005	5.52	5.41

Variable	Year	School Mean	Primary State Mean
School Resources / Facilities	2004	5.18	5.07
	2005	5.27	5.06

School Mean against Primary State Mean



Notes: * The school trendline is being trialled. It is only plotted when there is data for each calendar year.

^^ State Means available for Primary, Secondary, Pri/Sec, Special and SDS schools.

Staff Opinion

School no: 652

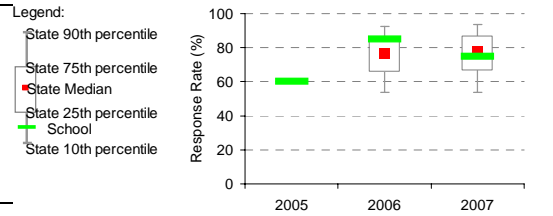
School name: Winters Flat Primary School

Explanation: A self-completion questionnaire to obtain the staff's opinions of the school. The survey was administered online using the School Organisational Health Questionnaire.

Source of data: Data transmitted from school staff to DEECD via an online survey application.

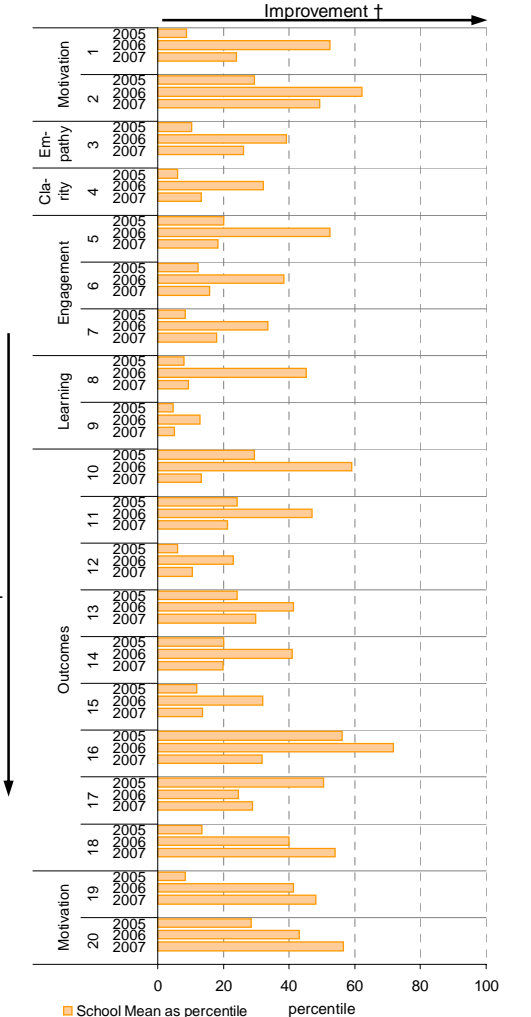
Variable	No.	Name	Year	School mean	State Primary median
1 Individual Morale			2005	64.7	75.5
			2006	76.1	75.6
			2007	71.1	76.8
2 School Morale			2005	71.3	77.6
			2006	81.2	78.1
			2007	79.2	79.2
3 Supportive Leadership			2005	63.3	80.0
			2006	76.5	80.0
			2007	73.1	80.6
4 Role Clarity			2005	66.7	79.2
			2006	75.7	79.6
			2007	71.2	80.1
5 Professional Interaction			2005	72.9	80.5
			2006	81.3	80.7
			2007	74.0	81.9
6 Participative Decision-Making			2005	62.0	74.8
			2006	71.7	75.1
			2007	64.6	76.3
7 Goal Congruence			2005	69.2	81.4
			2006	78.2	81.7
			2007	74.7	82.6

School response rate** against Primary school distribution

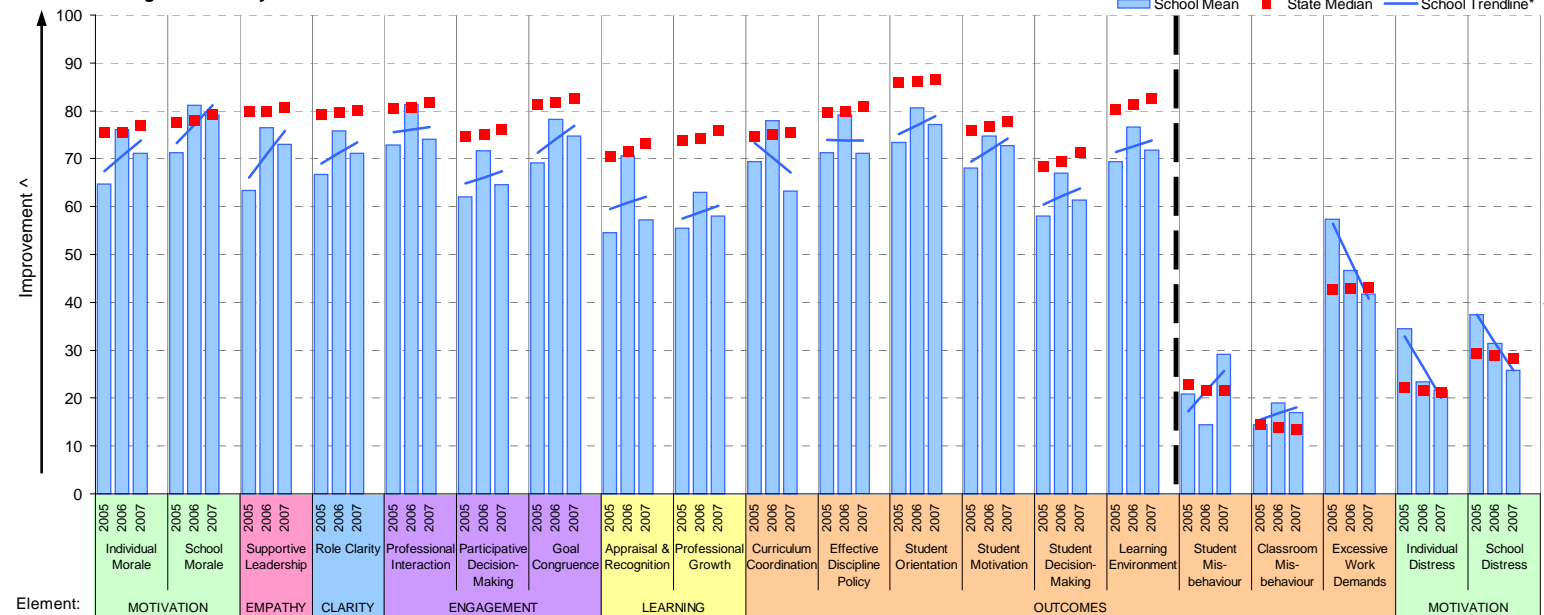


Year	No. of respondents	No. invited	Response Rate
2005	12	20	60%
2006	17	20	85%
2007	18	24	75%

School Mean as percentile (by school type)



School Mean against Primary State Mean



Notes: * The school trendline is being trialled. It is only plotted when there is data for each calendar year.

** If there were 6 or less respondents, table data is not shown for confidentiality reasons. If there were 3 or less respondents, graph data is not shown for confidentiality reasons.

^ The higher the school mean, the more positive the outcome for variables 1 to 15. The lower the school mean, the more positive the outcome for variables 16 to 20.

† The higher the school percentile, the more positive the outcome for all variables.

^^ Benchmarks are available for Primary, Secondary, Pri/Sec, Special & SDS schools.

Staff Sick Leave

School no: 652

School name: Winters Flat Primary School

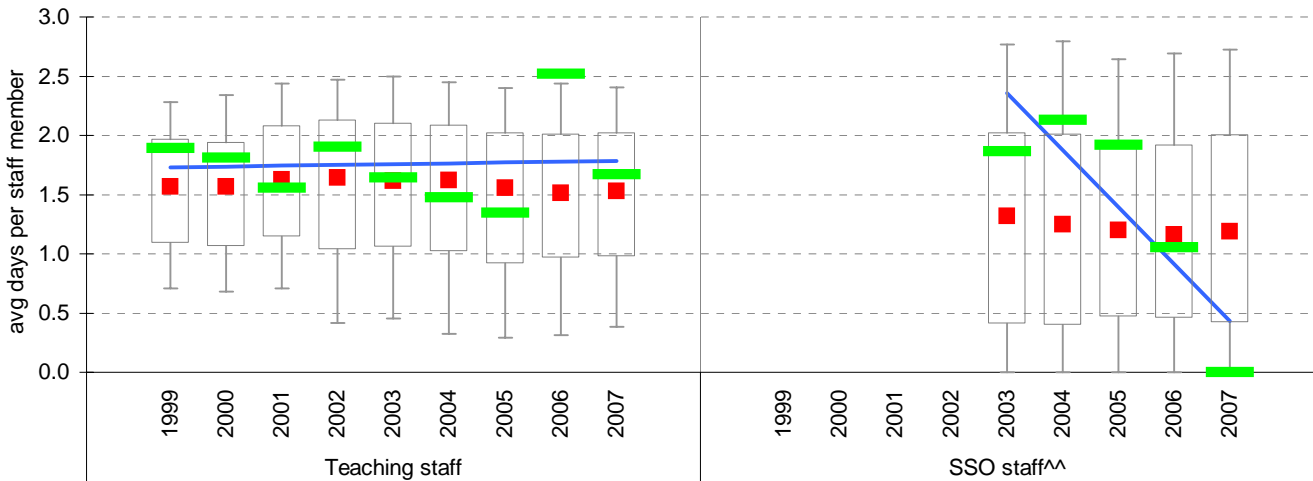
Explanation: The number of non-certificated and total sick leave days taken per staff member. A detailed explanation on how staff sick leave is calculated is provided in the Annual Reports Frequently Asked Questions page of the Standards website (<http://www.sofweb.vic.edu.au/standards/account/arepq.htm>).

Source of data: Human Resources Management System (HRMS)^.

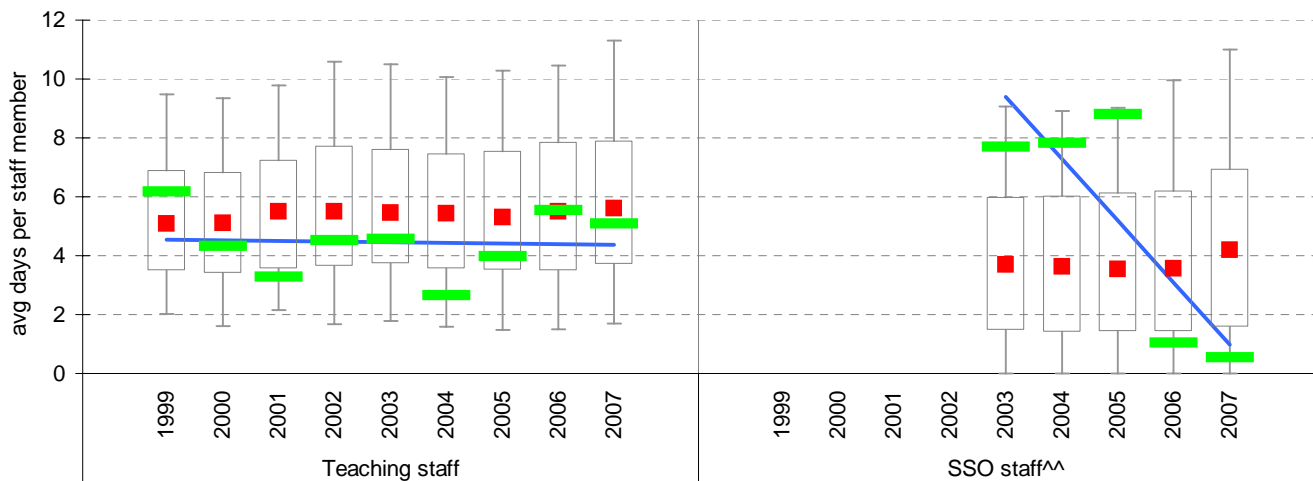
Staff Type	Non-Certificated sick leave days per staff member^									2007 State Median
	1999	2000	2001	2002	2003	2004	2005	2006	2007	
Teacher	1.89	1.81	1.55	1.90	1.64	1.48	1.35	2.52	1.67	1.53
SSO^^					1.86	2.13	1.92	1.05	0	1.19

Staff Type	Total sick leave days per staff member^									2007 State Median
	1999	2000	2001	2002	2003	2004	2005	2006	2007	
Teacher	6.18	4.33	3.28	4.51	4.57	2.65	3.97	5.53	5.08	5.61
SSO^^					7.69	7.83	8.81	1.05	0.55	4.20

NON-CERTIFICATED sick leave



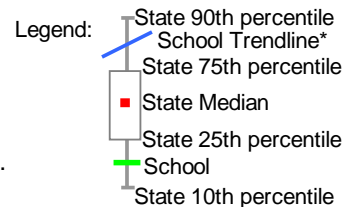
TOTAL sick leave



Note: * The school trendline is being trialled. It is only plotted when there is data for each calendar year.

^ There may be some discrepancy between the results from CASES & those from HRMS. The latter are considered to be more accurate.

^^ Data for SSO (School Services Officer) staff is only available from 2003.



Teaching Staff Retention

School no: 652

School name: Winters Flat Primary School

Explanation: The retention rate of teaching staff is determined by matching staff payroll records for the last pay in June of one year (Year A), to the last pay in June of the following year (Year B).

Source of data: Human Resources Management System (HRMS).

Teaching Staff*

Year A	Year B	Number of Teaching Staff in Year A	Number of Teaching Staff retained in Year B	Teaching Staff Retention Rate	Statewide Average
2005	2006	15	14	93%	87%
2006	2007	17	16	94%	86%

Of the 15 teaching service staff at June 2005 (including those on leave without pay), 14 or 93% were still at the school at June 2006. This figure across all Government schools was 87%.

Of the 17 teaching service staff at June 2006 (including those on leave without pay), 16 or 94% were still at the school at June 2007. This figure across all Government schools was 86%.

Ongoing Teaching Staff*^

Year A	Year B	Number of Ongoing Teaching Staff in Year A	Number of Ongoing Teaching Staff retained in Year B	Ongoing Teaching Staff Retention Rate	Statewide Average
2005	2006	12	12	100%	91%
2006	2007	14	13	93%	90%

Of the 12 ongoing teaching service staff at June 2005 (including those on leave without pay), 12 or 100% were still at the school at June 2006. This figure across all Government schools was 91%.

Of the 14 ongoing teaching service staff at June 2006 (including those on leave without pay), 13 or 93% were still at the school at June 2007. This figure across all Government schools was 90%.

Notes: * Teaching staff includes Principal class, Teacher class and Instructor class. Teaching staff employed as visiting teachers, guidance officers, curriculum consultants, etc. are excluded as they are not charged to a particular school.

^ Not including fixed term staff, except for where staff had changed from ongoing in Year A to fixed term in Year B.

Bank Balances

School no: 652

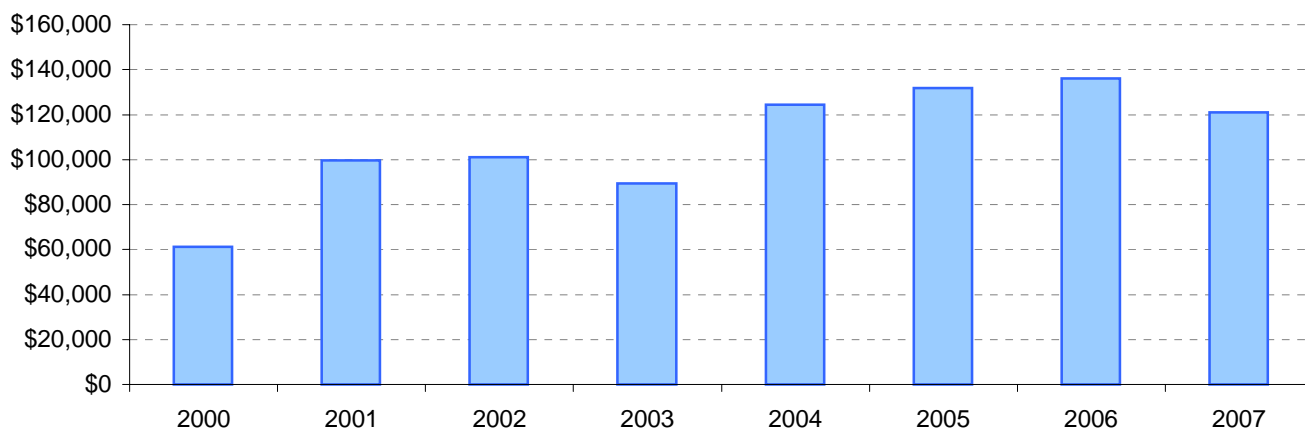
School name: Winters Flat Primary School

Explanation: Account balance figures include official and investment accounts, and are calculated by taking the opening balance at 1st January plus the total receipts at 31st December less total payments at 31st December.

Account Balances (Official plus Investment Accounts)

2000	\$61,292	2004	\$124,530
2001	\$99,710	2005	\$131,924
2002	\$101,161	2006	\$136,012
2003	\$89,361	2007	\$121,054

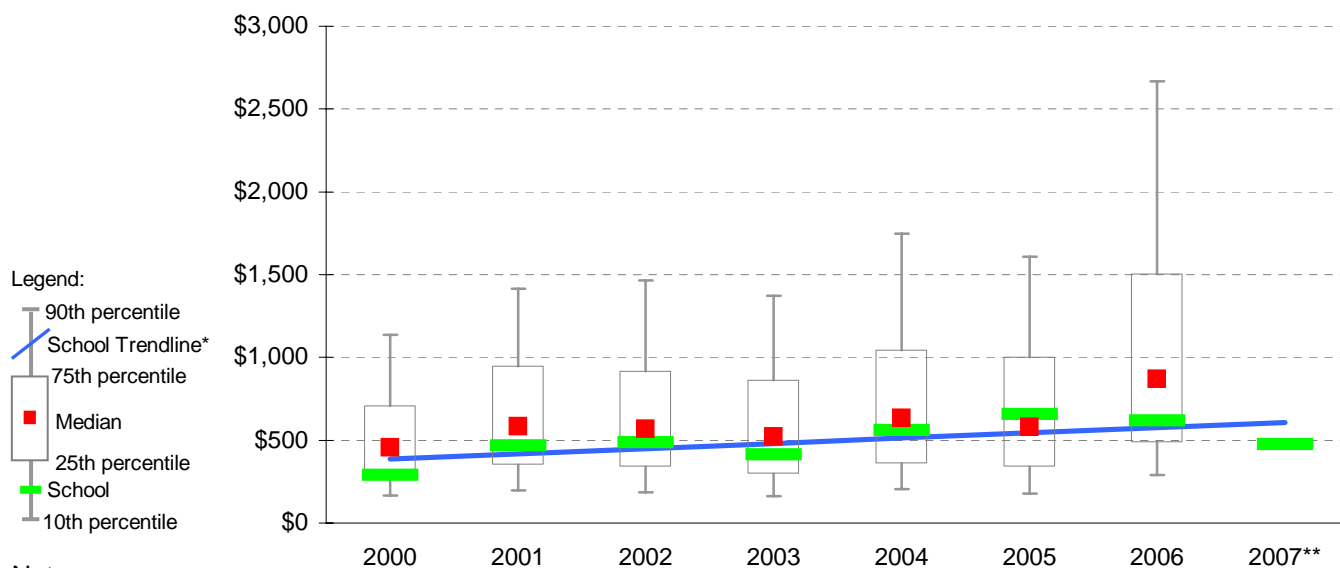
Account Balances



Account Balances (Official plus Investment Accounts) per student[†]

2000	\$292	2004	\$561
2001	\$469	2005	\$656
2002	\$488	2006	\$618
2003	\$413	2007	\$474

School account balances per student enrolled in August census plotted on state Primary benchmarks[^]



Notes:

* The school trendline is being trialled. It is only plotted when there is data for each calendar year.

** 2007 benchmarks will be calculated in August, when data from all schools has been submitted.

† The account balance per student has been calculated to enable some comparison to be made between schools.

^ Benchmarks for primary, secondary, pri/sec, SDS, special and language schools.